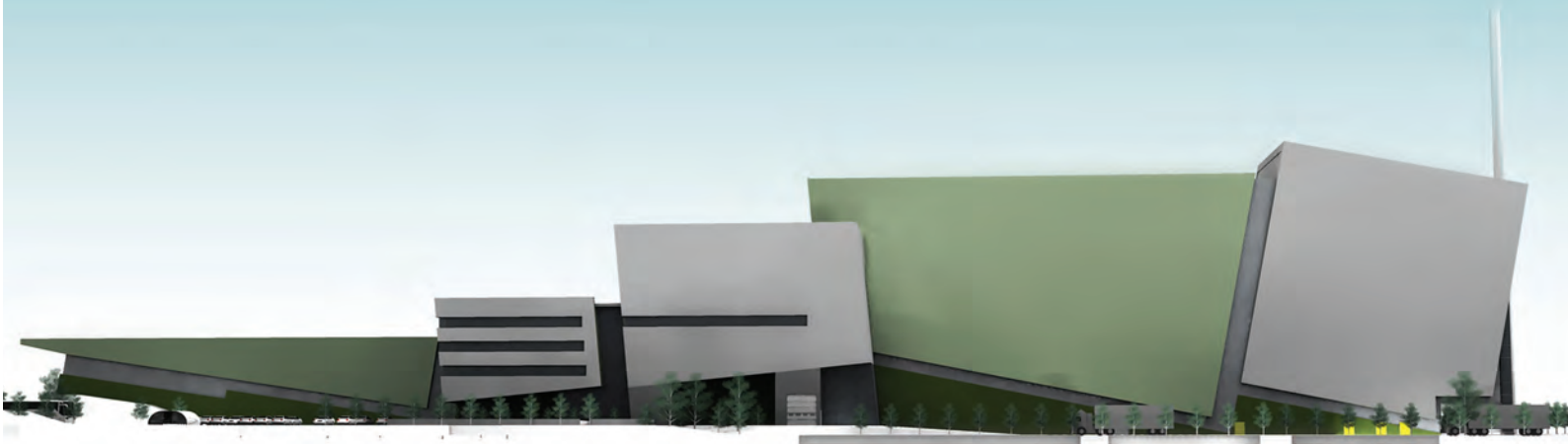


Urbaser Balfour Beatty Gloucestershire Spring 2012 Newsletter

Update on the proposed Energy from Waste facility at Javelin Park, Haresfield



Urbaser and Balfour Beatty (UBB) have been selected by Gloucestershire County Council's Cabinet as its preferred bidder to design, build and operate a state-of-the-art Energy from Waste (EfW) facility at Javelin Park, Haresfield near to junction 12 of the M5 motorway.

The proposed facility will divert over 92% of Gloucestershire's residual municipal waste from landfill, prevent the equivalent annual greenhouse gas emissions of nearly one million cars and generate 14.5 megawatts of electricity annually – sufficient to power more than 25,000 homes.

This is the first in a series of newsletters intended to keep local people informed about our proposal as it develops.

In this newsletter read about:

Gloucestershire County Council aiming towards 'zero waste to landfill'

Maximising energy efficiency

Planning and permitting

Consultation feedback

The proposal in context

After householders in Gloucestershire have reduced, reused, recycled and composted as much as they can, there will always be some waste left over. This material, which ends up in black bin bags, is referred to as 'residual waste'.

The Gloucestershire Waste Partnership (GWP) is made up of the six district and borough councils that collect household waste in Gloucestershire and Gloucestershire County Council. Gloucestershire County Council has responsibility for disposing of the waste that the district and borough councils collect and operating all but one of the household recycling centres. Together they have developed a joint waste strategy that includes Gloucestershire moving towards zero waste to landfill.

The proposed EfW facility at Javelin Park will address the GWP's Objective 5 of the joint waste strategy, which is about making the best use of residual waste as a resource, by providing residual waste treatment capacity to divert left over waste from landfill. The Javelin Park EfW facility will also recover more materials for recycling and generate a renewable energy supply.

Further information about the Gloucestershire Waste Partnership and the joint waste strategy can be found at: www.recycleforgloucestershire.com/partnership

Green ambitions

Currently at 48% for 2011/2012, Gloucestershire is performing consistently ahead of the UK average of 40%, but we can do more. The county council has high ambitions.

We want to:

Step 1 Maximise recycling with a target of 60% recycling by 2020 and an aspiration to reach a 70% recycling and composting rate by 2030.

Step 2 Avoid landfill and generate useful energy and materials from what is left over.

Our ultimate aim is Zero Waste to Landfill

If we achieve our ambition of **70%** it will make our county one of the highest performing recyclers in Europe.



Maximising efficiency

The facility will be designed as a Combined Heat and Power (CHP) plant so that as well as recovering energy in the form of electricity, which will be routed to the National Grid, heat in the form of hot water can be captured and used.

This differs significantly from conventional methods of electricity generation in which large amounts of heat can often be wasted. UBB is currently investigating the opportunities for the export of heat to businesses and other potential local heat users. The facility is designed to be 'CHP ready', which means that once a suitable heat client becomes available, the facility will already be equipped to transfer the heat generated.



A local facility for local waste

The Javelin Park EfW facility has been designed for the treatment of up to 190,000 tonnes per year of Gloucestershire’s residual waste. This includes a small amount of capacity for local business waste, helping offset the cost of the facility for the local council tax payers.

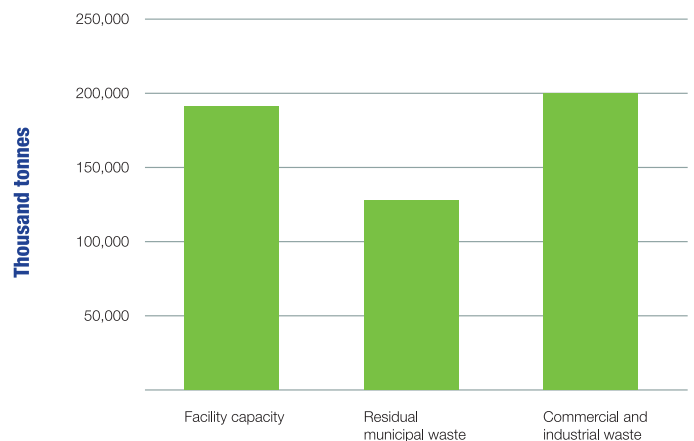
Treating business waste from the local area will bring environmental and cost benefits. This means that increased recycling at the household level will not result in a shortfall of available waste to treat in the EfW facility.

Generating renewable energy

In order to combat climate change, the UK has a commitment to generate at least 10% of its electricity from renewable sources by 2010 and 15% by 2020.

The facility will increase the county’s renewable energy production by over 50%, with approximately 56% of the energy generated at the facility being classed as renewable.

Projected waste arisings 2027/28



Planning and permitting

Before the proposed EfW facility can be built at Javelin Park, UBB will need to obtain planning permission from Gloucestershire County Council as the Waste Planning Authority (a different part of the council to the waste management department).

The planning application was submitted in February 2012 and the statutory consultation is now underway. The planning application and all supporting documents have been published online and are available at www.gloucestershire.gov.uk/dc and www.ubbgloucestershire.co.uk

The planning application describes the proposed development in detail. The accompanying Environmental Statement provides information on potential impacts and how they will be minimised. The Statement of Community Involvement demonstrates how we have listened to and taken into account the views of the local community.

In addition to planning permission, Urbaser Balfour Beatty also needs to obtain a permit to operate the facility. As it will be Urbaser that will operate the facility when built, we have applied to the Environment Agency for a permit under the name of Urbaser Environmental Limited.

The Environment Agency will conduct its own independent consultation in relation to the operating permit. The application to the Environment Agency was also submitted in February and consultation is due to commence in April/May 2012.

Further information is available at www.environment-agency.gov.uk/homeandleisure/waste/137418.aspx

Consultation feedback

UBB has been engaging with local people through a variety of approaches designed to reach a wide cross-section of the local community.

This includes two public exhibitions in July and November 2011, attending community meetings, setting up a website with an email enquiry facility, and responding to written correspondence with local residents and other key stakeholders including town, parish and district councils, residents living near Javelin Park and other local community groups.

All comments received were taken into consideration when preparing our proposal for the scheme and our associated planning application. We will also consider any further comments that may arise during the formal planning consultation process.

Throughout the pre-planning consultation period of the project, UBB received written feedback from 98 individual people; at the exhibitions, we spoke directly to 332 people in July and 253 in November.

The range of comments suggested that people were broadly accepting of the need to avoid landfill, willing to take local responsibility for dealing with waste, in favour of recovering value from waste and, in principle, supportive of the recovery of energy from waste.

Key concerns raised by stakeholders related to the control of emissions, the facility's visual appearance, emissions, noise, odour and traffic impact. UBB has addressed these concerns in the planning application as follows >>

Visual appearance

The proposed facility will be a prominent feature in the landscape and this has guided the design process. The building has been designed to be sympathetic to the surrounding environment through a sensitive choice of form, colours and materials, and will be surrounded by landscaping for wildlife and amenity.

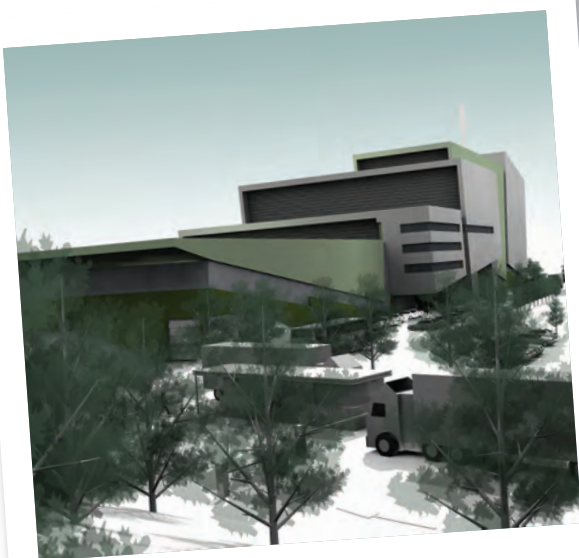
Traffic and transport

The site is close to strategic local highway connections (M5 and A38) and was previously granted planning permission for major industrial/commercial development.

The B4008 connection is of a high standard and is suitable to accommodate waste traffic. HGV access south of the site is prohibited, with the B4008 forming part of the Gloucestershire Lorry Management Zone. HGV movements to the site will be restricted to 7am-7pm, with the vast majority of movements taking place between 8am-4pm, Monday to Friday, though rush hours will largely be avoided.

The operator will observe a routing agreement which reflects the Lorry Management Zone and protects local settlements. It is anticipated that the plant will generate up to 104 HGV arrivals a day (Monday to Friday), which presents a net reduction in traffic demand when compared to the previous planning permission.

Routes for walking, cycling and public transport to and from the site will be established as part of a Sustainable Travel Plan.



Noise and odour

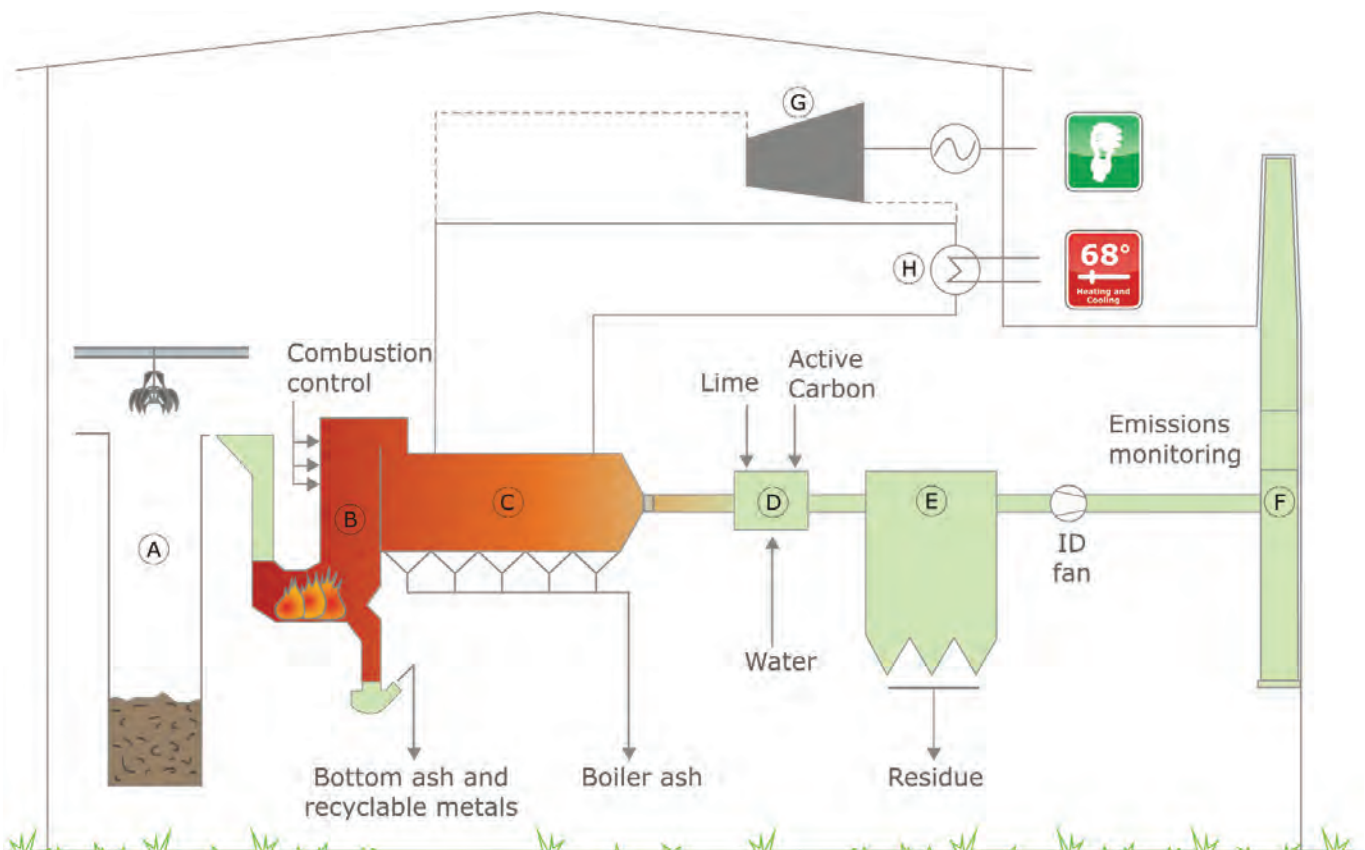
Potential noise and odour impacts will meet local restrictions so as not to cause disturbance to local residents. All waste-handling operations will take place inside the enclosed building, which will have specific noise and odour control features. Sound will be prevented from escaping the site by the use of insulation, roller-shutter doors and landscaping. Importantly, there will not be any deliveries of waste during the night or early in the morning.

All incoming waste will be stored inside the building where the odour will be managed. The air that is drawn into the building is fed through the furnace where it is combusted, destroying odours. Waste will not be stored at the facility for long periods of time.

Control of emissions

The facility has been designed to ensure that emissions fall well within permitted limits to comply with the EU Waste Incineration Directive (WID). Urbaser will be submitting continuous emission data to the Environment Agency, which will monitor and regulate the facility. Urbaser has an excellent track record of operating EfW facilities safely and emissions data will be made publicly available.

How the technology works



- | | |
|---------------------------|-------------------|
| (A) Waste bunker | (E) Bag filter |
| (B) Furnace | (F) Stack |
| (C) Boiler | (G) Turbine |
| (D) Cooling tower/Reactor | (H) Local heating |

Our experience

The case studies below highlight our approach at similar facilities in Europe. We will use our international best practice to treat Gloucestershire’s residual waste at Javelin Park.

Factfile

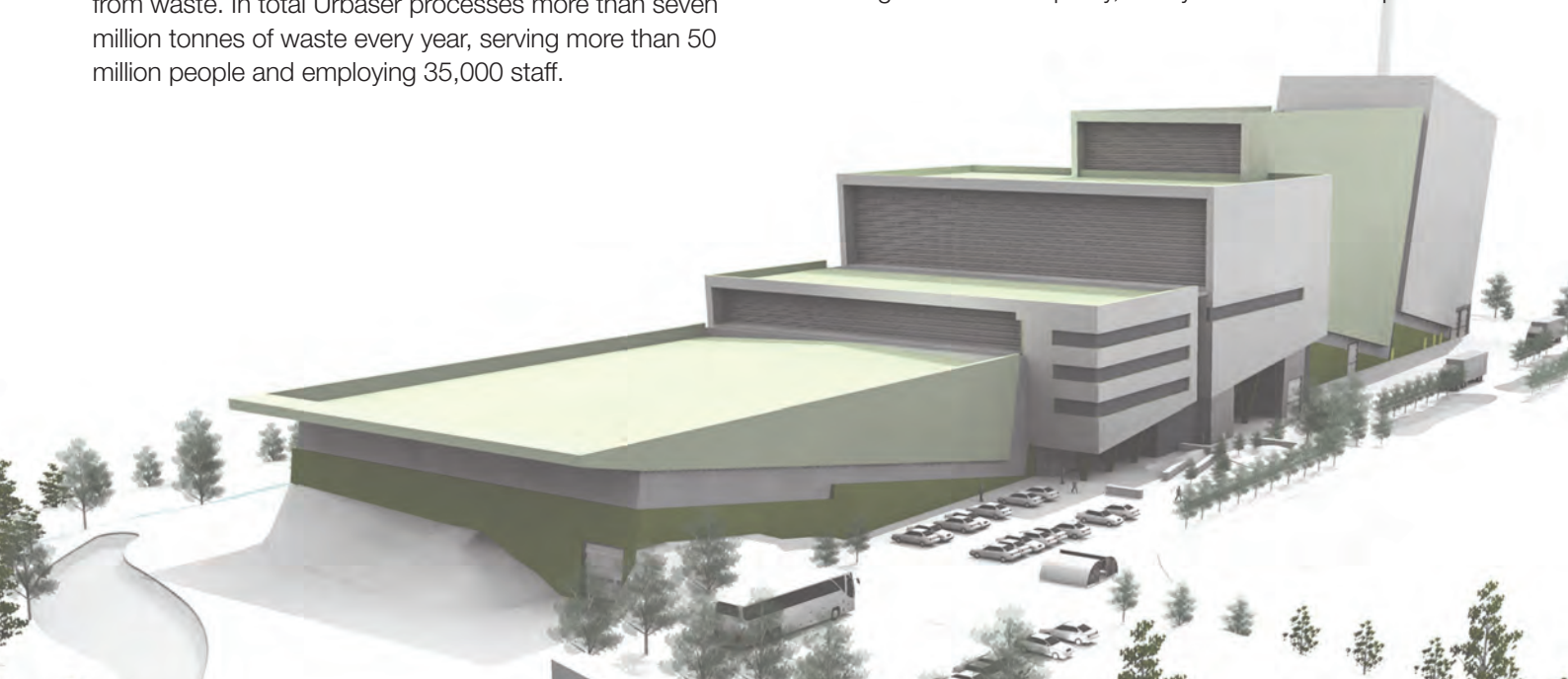
Urbaser is an international waste management company with more than 200 facilities worldwide. Part of the ACS Group (one of the leading construction companies in the world), Urbaser brings international experience to provide local waste management solutions.

Urbaser’s UK Headquarters are in Cheltenham and many of the company’s staff and families live in Gloucestershire. Urbaser also manages waste on behalf of Worcestershire and Herefordshire Councils.

Urbaser’s waste facilities include eight that recover energy from waste. In total Urbaser processes more than seven million tonnes of waste every year, serving more than 50 million people and employing 35,000 staff.

Balfour Beatty is a world-class infrastructure services business, operating in four strong and substantial areas of business; professional services, construction services, support services and infrastructure investments. The Balfour Beatty group employs over 53,000 people.

A key strength is the breadth of capability Balfour Beatty brings to major infrastructure projects that often require an integrated approach. Balfour Beatty works for customers in over 80 countries, but principally in the UK, Europe, the US, South-East Asia, Australia and the Middle East who value the highest levels of quality, safety and technical expertise.



Case study: Cantabria – an Energy from Waste facility run by its neighbours

The Cantabria facility run by Urbaser serves a similar sized population to Gloucestershire.

In addition to its low emissions and high quality standards, the facility also demonstrates how community involvement runs to the core of the service. With 90% of the employees being neighbours of the facility, it provides a real sense of local ownership.

Case study: Turning the lights on in Mallorca

Many of us have spent holidays in Mallorca, but how many spotted the Energy from Waste facility in Son Reus? Operating since 1997, the Environmental Technology Park of Mallorca (TIRME) plays a unique role in the economic and social fabric of the island. This facility diverts 92% of waste from landfill and generates nearly 5% of the electricity consumed in Mallorca and Menorca.

Keeping in touch

Urbaser Balfour Beatty will be taking part in the existing Javelin Park Community Forum organised by Gloucestershire County Council.

Throughout the planning process and for the life of the facility, UBB wishes to work with the local community to provide an opportunity for balanced discussion and to ensure local residents have access to all the information they require.

There will also be opportunities to get involved in our proposals for our Visitor Centre located on Javelin Park.

For more information on the Javelin Park Community Forum, please visit:

www.recycleforgloucestershire.com/recover and click on the 'What are local views?' page.



Contact us

If you would like further information on our proposal please get in touch:

Write to us:

FREEPOST RSTG-CELE-SKAE
Urbaser Balfour Beatty
c/o Sauce Consultancy
1 Quality Court
Chancery Lane
London WC2A 1HR

Email us:

info@ubbgloucestershire.co.uk

Complete the form on our website:

<http://www.ubbgloucestershire.co.uk/contact-us>

As part of our ongoing commitment to involving the community in our proposals, details concerning the planning application, statutory consultation, environmental permit application and ongoing activity will all be published on our website: www.ubbgloucestershire.co.uk