

# Urbaser Balfour Beatty Gloucestershire November 2013 Newsletter

Update on the proposed Energy from Waste facility at Javelin Park, Haresfield

## Public inquiry to start soon

**Following the Gloucestershire County Council (GCC) planning committee's decision to refuse planning permission for the Javelin Park proposals, Urbaser Balfour Beatty (UBB) has lodged an appeal with the Planning Inspectorate (PINS). The Secretary of State has now recovered the decision for his own determination, meaning he will make the final decision.**

The refusal came despite recommendation from GCC's planning officers to grant permission for the project, and the site's identification within GCC's recently approved, and independently reviewed, Waste Core Strategy as a site suitable for a waste management facility. UBB disagreed with the reasons for refusal given by the planning committee and has therefore lodged a planning appeal.

The facility would help divert over 92% of Gloucestershire's residual waste from landfill, reducing carbon emissions and the release of greenhouse gases. It would also save council tax payers up to £190m over 25 years, compared to landfilling the county's residual waste. The facility at Javelin Park would also create enough electricity to power approximately 25,000 homes. This would increase the county's renewable energy production by over 50%.

The public inquiry to hear the appeal will be starting shortly. More information on the appeal process can be found overleaf. The inquiry will sit for approximately five weeks in total; currently, the proposed dates are:

- **19-22, 26-28 November 2013**
- **10-13 December 2013**
- **14-17, 21-24 and 28 January 2014**

**These dates are subject to confirmation, modification and cancellation by PINS. Dates will be published on the PINS and GCC websites.**

## In this newsletter read about:

[An overview of the planning appeal process](#)

[The Planning Inspectorate](#)

[Reaching the 60% target](#)

[Appeal and Public Inquiry timeline](#)

## The appeal process

### Why is this happening?

Planning applications made under the Town and Country Planning Act (1990) are decided by the local planning authority (LPA). As a waste management facility, the LPA for a decision on the project was Gloucestershire County Council.

Once submitted, planning officers at the LPA review the application and how it relates to relevant planning policy. Based on this review, the officers make a recommendation to the planning committee to grant, refuse or defer planning permission for the proposals.

In the case of Javelin Park, the planning committee chose to refuse the planning application (against the recommendation of the planning officers). UBB chose to submit an appeal to the Planning Inspectorate (PINS), which has been accepted (more information on the PINS can be found on the next page).

### How does an appeal work?

A planning appeal consists of a number of key milestones (please see diagram on the back page). One of the first major milestones is for each interested party to put forward its argument in a statement of case, which has been done for the Javelin Park project.

The next major step is for the parties to agree statements of common ground. These important documents are a method by which the Planning Inspectorate can ensure the public inquiry focuses on the specific areas of dispute, ensuring that the appeal does not waste time discussing issues that have already been agreed by the parties. By agreeing the scope of the appeal, the discussion often becomes highly technical with all parties putting forward their detailed evidence to support their arguments.

The appeal is then heard at a public inquiry, which can last several weeks. The inquiry is similar to a trial heard in a court with a Planning Inspector taking the role of judge. Nearer to the start of the inquiry a detailed timetable is published by the Inspector. This will lay out what issues are to be discussed during individual sessions.

### More information

Further information about the appeal can be found at: [www.gloucestershire.gov.uk/javelin-park](http://www.gloucestershire.gov.uk/javelin-park). This website includes publicly available documents on the appeal and will be updated regularly.

More information about the appeal process in general can be found at: [www.planningportal.gov.uk/planning/appeals](http://www.planningportal.gov.uk/planning/appeals)



*Keeping the economic benefits of managing Gloucestershire's waste in Gloucestershire: last year UBB met with potential Gloucestershire based suppliers for the project.*



## Planning Inspectorate

The Planning Inspectorate for England and Wales (PINS) is a part of the Department for Communities and Local Government. PINS is responsible for deciding the final outcome for a wide range of planning functions, including planning appeals.

Based in Bristol, PINS employs around 250 planning inspectors who are appointed by the Secretary of State as his representatives. Inspectors are selected on the basis of their high level of experience within planning. In most cases this means that a planning inspector will decide on the outcome of a planning appeal.

The Secretary of State does however retain the ability to 'recover' a decision from PINS, meaning he would make

the final decision on a case. In these instances a planning inspector prepares a report and recommendation that is given to the Secretary of State to consider.

The Secretary of State has recovered the decision because he considered: "that the appeal involves proposals of major significance for the delivery of the Government's climate change and energy policies." (Letter from the Planning Inspectorate, 16 July 2013).

More information about PINS can be found at: [www.planningportal.gov.uk/planning/planninginspectorate](http://www.planningportal.gov.uk/planning/planninginspectorate)

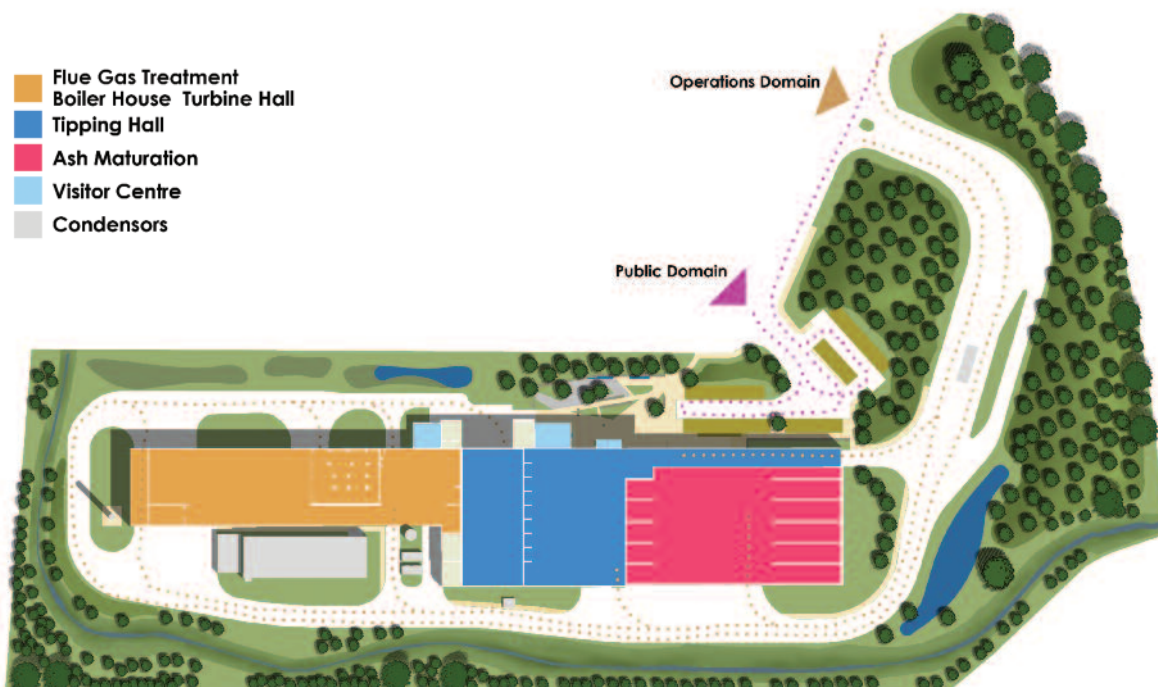
## Reaching the 60% target

The Gloucestershire Waste Partnership (comprising of GCC and its six district partners) has set itself the target of recycling 60% of household waste by 2020 – just over six years away. The county has an interim target of 50% recycling by 2014/15, having met its 2009/10 target of 40%. Gloucestershire's current recycling rate is 48%, so it is vital everyone recycles as much as they can.

The Javelin Park proposals are designed to deal with the waste that is left over after recycling, and ensure that it is

not wastefully landfilled. The proposals are also designed to make the best use of the remaining waste locally, so that benefits such as generating energy and creating employment remain within Gloucestershire, rather than being exported to other counties, or even to other countries.

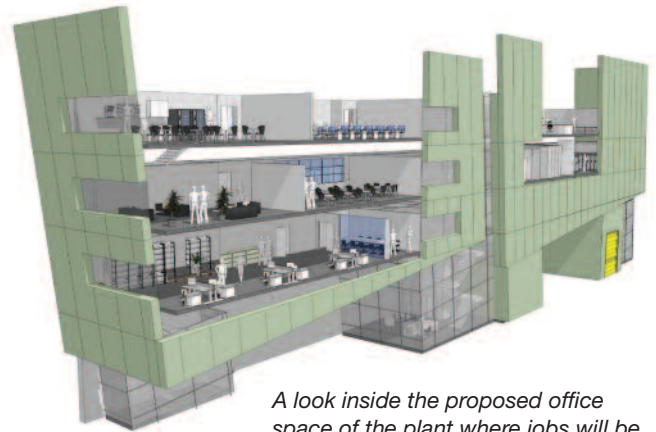
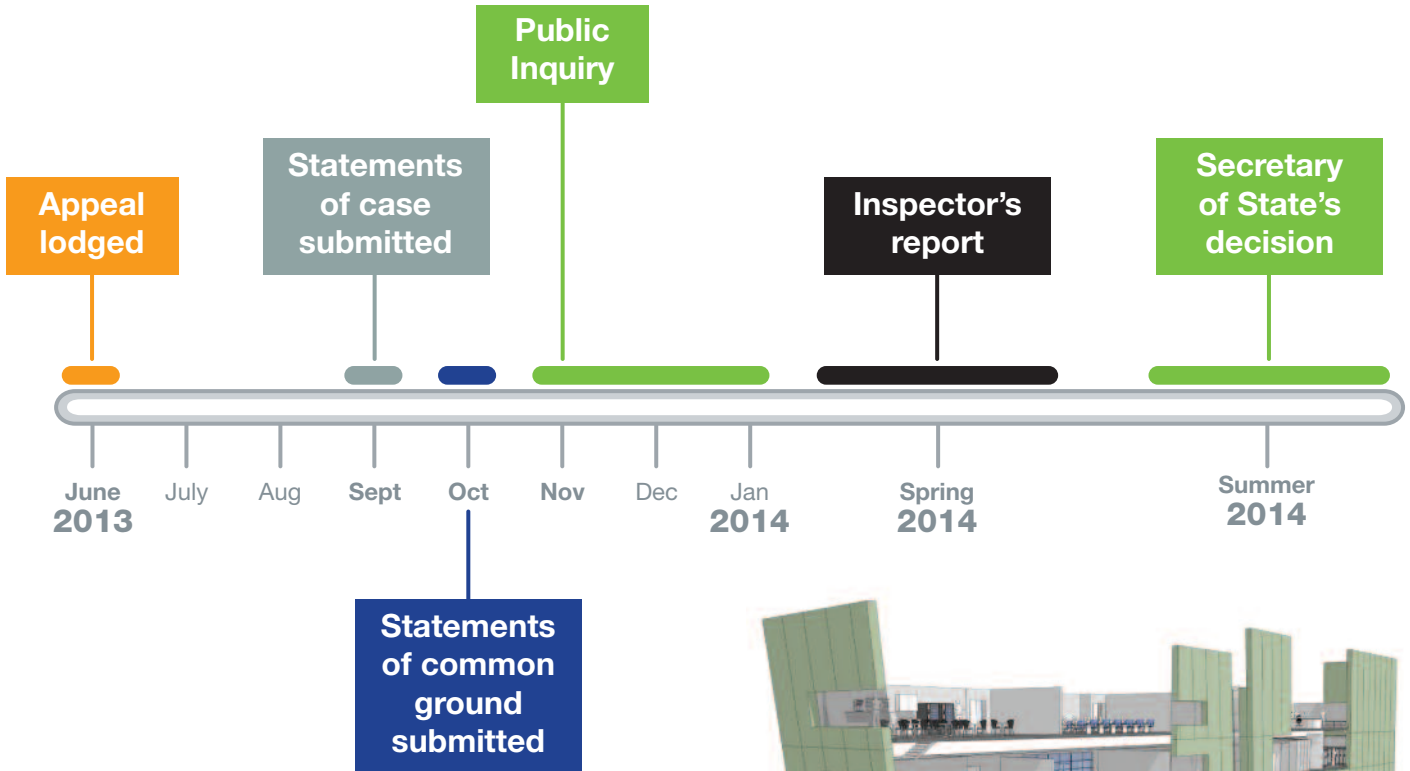
In Gloucestershire, each household creates around one tonne of waste every year, about the same weight as a small car.



*The facility's education centre will complement GCC's efforts to ensure future generations create less waste and recycle as much as possible, whilst helping to divert up to 92% of the waste produced by households.*

# Appeal and public inquiry timeline

Subject to planning approval by the Secretary of State, construction will commence in winter 2014/15. The timeline below is subject to change by PINS.



*A look inside the proposed office space of the plant where jobs will be created for local people.*

## Contact us

**If you would like further information on our proposal please get in touch:**

Write to us:

**FREEPOST RSXR-TBUJ-SAKG**  
**UBB Gloucestershire**  
 c/o Urbaser Ltd  
 Unit F, Pate Court  
 St. Margaret's Road  
 Cheltenham, GL50 4DY

Email us:

**info@ubbgloucestershire.co.uk**

Complete the form on our website:

**<http://www.ubbgloucestershire.co.uk/contact-us>**

More information about the project can be found on our

website: **[www.ubbgloucestershire.co.uk](http://www.ubbgloucestershire.co.uk)**



**Balfour Beatty**