

**Balfour Beatty****UBB (Gloucestershire) Construction JV**  
*Gloucestershire Energy from Waste Facility*

Welcome to the sixth newsletter from the Gloucestershire Energy from Waste project. The construction of this facility is part of a joint venture between Urbaser and Balfour Beatty (UBB) to provide a key element of waste management infrastructure in line with Gloucestershire's Joint Municipal Waste Management Strategy.

The main structures are emerging with the erection of the steelwork to support the main buildings and the process plant, which is being installed as building works progress.

As well as these quarterly community-based newsletters, we also publish regular construction update bulletins and attend Community Liaison Group meetings. To find out more about these, please visit our website at [www.ubbgloucestershire.co.uk](http://www.ubbgloucestershire.co.uk) or for any queries please contact us directly: [info@ubbgloucestershire.co.uk](mailto:info@ubbgloucestershire.co.uk)

With best wishes,  
Andrew Bendall  
Urbaser Balfour Beatty Project Director



With erection of the main buildings and steel structures continuing to schedule, there has been increased activity as the process equipment is installed. At the heart of the energy from waste plant is the combustion grate which is now in place, and preparations are in hand for the installation of the boiler panels which will capture the energy created from the combustion process and raise steam to drive the turbine and electricity generator.

In the basement beneath this grate, the incinerator bottom ash handling and conveying systems are being installed. Also located here is a heat exchanger which enables us to use low grade heat energy (after the turbine has done its work) to pre-heat the air that will be used in the combustion process. This is one element of the design aimed at maximising the recovery of every 'ounce' of energy in the system wherever possible.

The first elements of the flue gas treatment system are now in place, as is the main boiler feedwater tank, and the tanks holding demineralised water. The facility uses domestic mains water to raise steam in the boiler, but this must be cleaned or demineralised in order to limit the build-up of solid particles in the boiler, which means that the water can be recirculated and reused as much as possible.

Linking all of these elements are copious amounts of pipework and ducting, fans and pumps of all sizes, all suitably insulated and clad to retain heat. The steam turbine and associated electricity generating equipment will be installed shortly. Off site, work on the installation of the electricity grid connection cable is nearing completion.



### **Weld Done**

Once the boiler and the water and steam handling systems are installed and connected, there will be a rigorous testing regime implemented to ensure that none of the equipment leaks!

A critical element of this is in the quality of the welding in all areas of the plant, especially in areas that will rarely, if ever, be seen once the facility is operational. Specifications are in place to support the construction and quality requirements, ensuring project operations meet the strict government legislation.

The welders' work is regularly tested and reviewed to make sure that defects that may weaken the structure are not introduced into the welds. The materials used in the fabrication of the boiler are all compliant with EU directives, and are sourced from Europe.



## **In the Spotlight: Steve Kay, Commercial Manager**

Putting together a hugely complex Energy from Waste facility requires great attention to detail, especially when it comes to getting value for money on thousands of goods and services orders. With a team of five quantity surveyors, the person responsible for purchasing is Commercial Manager, Steve Kay.

### **What is your background to working in this area?**

I trained as a commercial manager with a large engineering company in the North East of England. The training took four years and involved a mix of vocational and academic training in contract law, interpreting technical drawings, writing and understanding contracts, negotiation techniques, and people management. I've been involved in the energy sector for over 20 years and have been fortunate enough to work on some interesting projects in the sector both in the UK and across Europe.

### **Is this your biggest project to date?**

This is the fourth EfW I have worked on, although I am based on site full-time for this project, where in the past I have either had a visiting role to the project location or been based in the Head Office. The largest project I've worked on was a project in the defence sector, which was valued at over £1bn. That said, every project no matter the sums of money involved, has its unique challenges that keeps things interesting.

### **Do you consider yourself a 'natural' negotiator? What training or skills are required for your role?**

I do, to an extent, but there are many people that think that negotiating is not a natural skill and must be learned. What I can say for certain is that I'm much better now than when I was a 16 year old fresh to the industry. It's important to clearly understand what the aim is, be confident, be able to think on your feet, and to be well prepared.

### **Cheapest is not always the best. What is critical to 'value' beyond the price?**

There are many things to consider when placing a contract to purchase goods or services. Price is obviously key, but on major projects that are time-sensitive you need to give due consideration to the level of experience a company may have, their approach to safety, ability to deliver similar projects successfully in the past, and the way in which the company deals with its employees, supply-chain, the environment, and how they approach quality. What we've also tried to do as a project team is utilise local suppliers, and we have an excellent record of doing so. To date we have worked with 24 local goods and services suppliers.

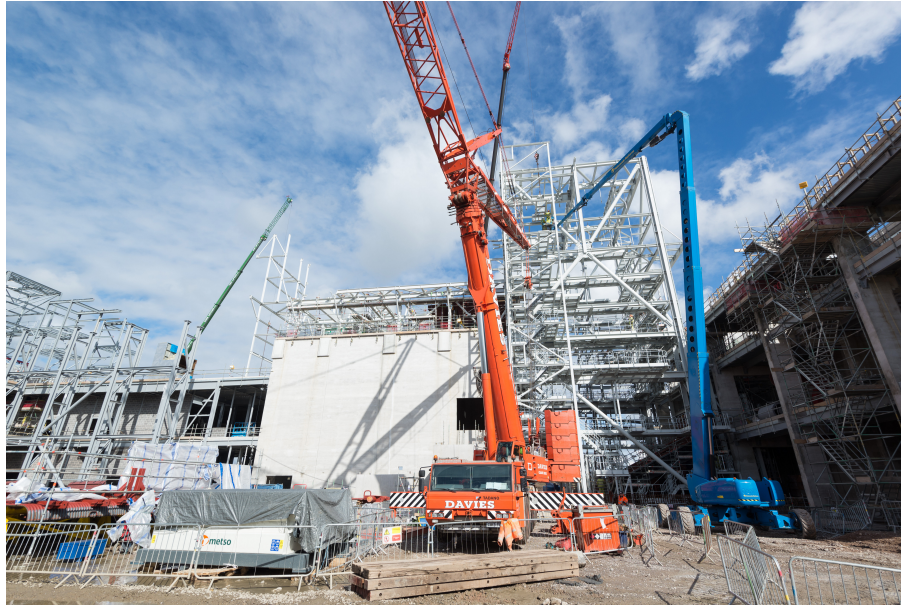
### **What have been your biggest and smallest procurements on this project?**

A number of construction packages are in excess of £6m, but the biggest we've placed as a team since commencing at site is the contract for the reinforced concrete scope of works. That package is in excess of £16m.

The smallest value package is for just over £10 and was for the purchase of insulation for pipework on the offices that we work from. Believe it or not, we go through the same process no matter what the cost is and that means

**What has been your best result to date?**

It's difficult to pick one, but the most satisfying was definitely concluding a large value contract with a local company to undertake the fire detection work.

**Unusual traffic movement**

Over the next few months there may be a few very heavy loads coming to site, which need access to our construction compound. The bridges that cross the stream on site and give access to this compound are not strong enough to take these odd loads, and so we have agreed a protocol with the Planning and Highways Authorities to get these vehicles on site using our emergency gateway some 300 metres south of the main entrance. Under the protocol we are required to give immediate local parishes 48 hours notice of these movements.



## A message from Gloucestershire County Council on recycling

With the current construction of the Gloucestershire Energy from Waste facility underway, Gloucestershire County Council would like to remind residents that our viewpoint on recycling will not change, even when we are no longer sending our residual or 'black bag' waste to landfill.

The Energy from Waste facility is designed to treat the residual waste from Gloucestershire's residents when achieving a 70% recycling rate. This means that even with our current recycling rate of around 55%, there is still work to do to reduce Gloucestershire's residual waste further.

Gloucestershire County Council and its district partners will continue its campaigns and projects aimed at the reduction of waste and ensuring that the correct waste ends up in the correct bin, and will continue to support residents to achieve a higher recycling rate.



## Community Engagement

The Community Liaison group met on Tuesday 13 March where an update on the progress of construction was made, and a number of queries and questions were posed by community representatives. Key issues were; ongoing concerns over the power export cabling works being undertaken on the B4008 and through Stonehouse,

[Subscribe](#)[Past Issues](#)[RSS](#)

The minutes of the CLG meeting will be [posted on the website](#). Responses to questions not answered at the meeting will either be attached to the minutes, or addressed at the next meeting, which is scheduled for 15th May.

In February, Project Director Andy Bendall was interviewed on BBC local radio about progress of the construction works.



**UBB (Gloucestershire) Construction JV**  
**Gloucestershire Energy from Waste Facility**

[www.ubbgloucestershire.co.uk](http://www.ubbgloucestershire.co.uk)

For more information contact [info@ubbgloucestershire.co.uk](mailto:info@ubbgloucestershire.co.uk)

You are receiving this email because you subscribed to the UBB Gloucestershire Distribution List.

Copyright © 2018 Urbaser Balfour Beatty Limited, All rights reserved.

Want to change how you receive these emails?

You can [update your preferences](#) or [unsubscribe from this list](#)

This email was sent to <<Email Address>>

[why did I get this?](#) [unsubscribe from this list](#) [update subscription preferences](#)

Urbaser Balfour Beatty · UBB Gloucestershire · First Floor, Westmoreland House, 80-86 Bath Road, · Cheltenham, Gloucestershire GL53 7JT · United Kingdom

MailChimp