

General Notes

All site dimensions shall be verified by the Contractor on site prior to commencing any works.

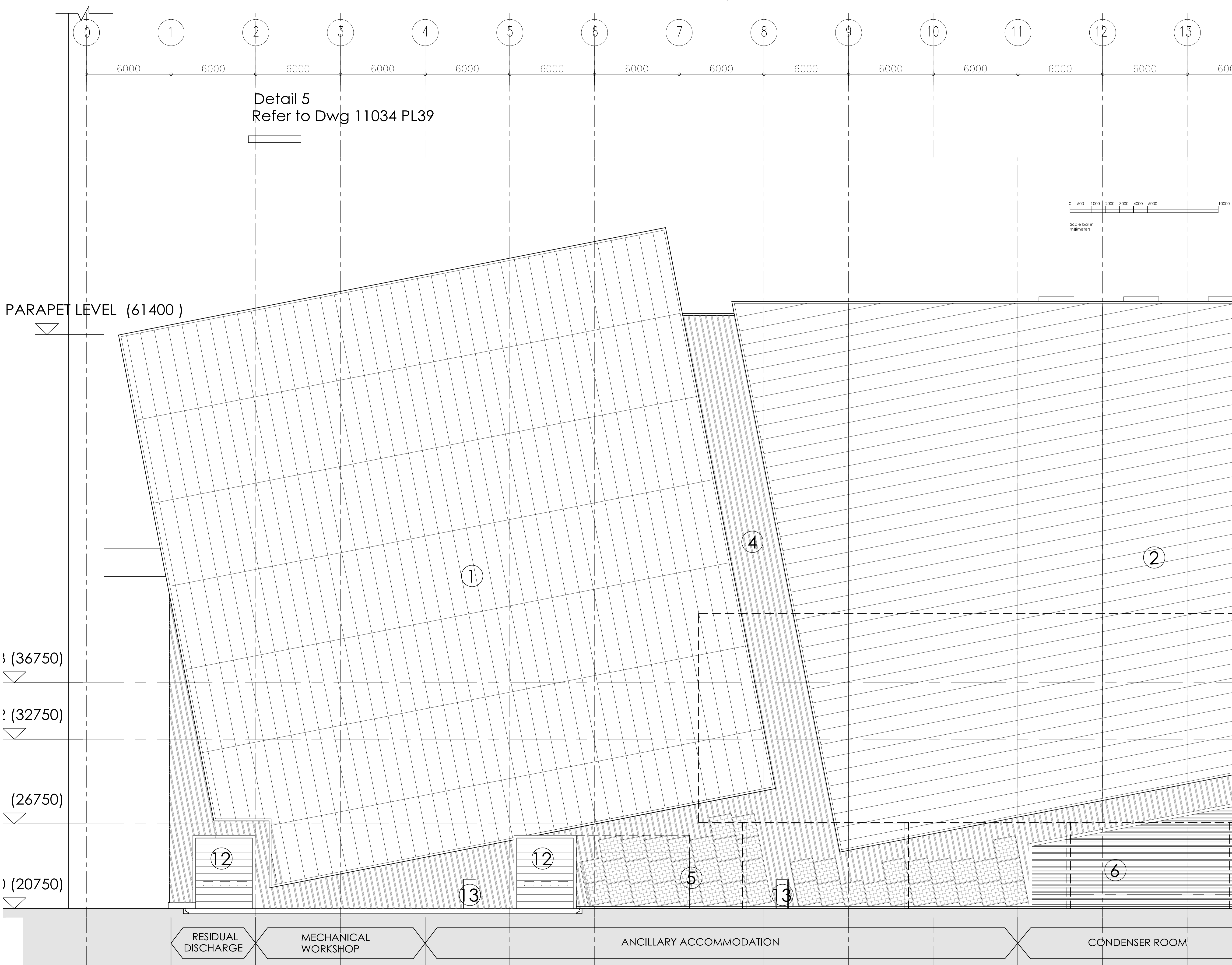
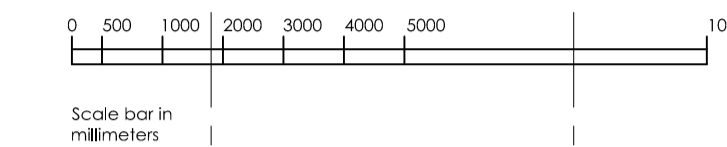
Do not scale from this drawing.

Only work to written dimensions.

This drawing is the property of Fletcher-Rae (UK) Limited (t/a Fletcher-Rae) and copyright is reserved by them. The drawing is not to be copied or disclosed by or to any unauthorised persons without the prior written consent of Fletcher-Rae (UK) Limited.

Schedule for cladding materials

1. Main cladding element to be Kingspan AWP KS1000 flat composite insulated cladding panel system. 1000mm module secret fixed laid at nominal 11 degrees incline to the vertical. Supported on secondary steel cladding rails set out in accordance with system requirements relative to specific application and site location and extent of exposure. Horizontal drip flashings to be incorporated at panel ends Colour RAL 7040.
 2. Main cladding element to be Kingspan AWP KS1000 flat composite insulated cladding panel system. 1000mm module secret fixed laid at nominal 11 degrees incline to the horizontal. Supported on secondary steel cladding rails set out in accordance with system requirements relative to specific application and site location and extent of exposure. Vertical joints between panels to be set at 90 degrees (necessitating cut panels) and finished with proprietary top hat section External finish - Kingspan XL Forte 'Symphony Collection' Coating System Colour RAL 6021.
 - 2A. Main cladding element to be Kingspan AWP KS1000 flat composite insulated cladding panel system. 1000mm module secret fixed laid at nominal 9 degrees incline to the horizontal. Supported on secondary steel cladding rails set out in accordance with system requirements relative to specific application and site location and extent of exposure. Vertical joints between panels to be set at 90 degrees (necessitating cut panels) and finished with proprietary top hat section External finish - Kingspan XL Forte 'Symphony Collection' Coating System Colour RAL 6021.
 3. Main cladding element to be Kingspan AWP KS1000 flat composite insulated cladding panel system. 1000mm module secret fixed laid at nominal 6 degrees incline to the vertical. Supported on secondary steel cladding rails set out in accordance with system requirements relative to specific application and site location and extent of exposure. Vertical joints between panels to be set at 90 degrees and finished with proprietary top hat section Colour RAL 7040.
 4. Shadow cladding element between main elements and along lower edge of main element to be Kingspan KS profiled composite cladding panel system laid at nominal 6 degree incline to the vertical. Cut lapped horizontal jointing with exposed fixings. External finish - Kingspan XL Forte 'Symphony Collection' Coating System Colour RAL 7043.
 5. Galvanised mesh planting framework to be mechanically secured to shadow cladding, on proprietary galvanised top hat sheeting rails spacing mesh from face of cladding. Mesh panels to be fully trimmed around perimeter with edging channel.
 6. Overblade aluminium louvre to projecting soffit along north elevation. PPC finish with fly screen backing Colour RAL 7043.
 7. Aluminium curtain wall glazing to gable end to each side and over the top of the central solid cladding. No requirement for opening lights. Frame to receive PPC finish to standard RAL colour 7043. Double glazing to be toughened both panes, nominal 6:12:6 glass and cavity thickness. Glass to be clear polished float glass.
 8. FGT gable infill Main cladding element to be Kingspan AWP KS1000 flat composite insulated cladding panel system. 1000mm module secret fixed laid horizontal. Supported on secondary steel cladding rails set out in accordance with system requirements relative to specific application and site location and extent of exposure. Vertical joints between panels to be set at 90 degrees and finished with proprietary top hat section Colour RAL 6021.
 9. Condenser screening Main cladding element to be Kingspan AWP KS1000 flat composite insulated cladding panel system. 1000mm module secret fixed laid at horizontal Colour RAL 6021.
 10. Translucent cladding, (Rodecca or similar).
 11. Fair faced concrete.
 12. PPC insulated panel door Colour RAL 1023.
 13. PPC metal faced personnel / access doors Colour RAL 1023.
- Exhaust stack and fuel tanks to be galvanised steel



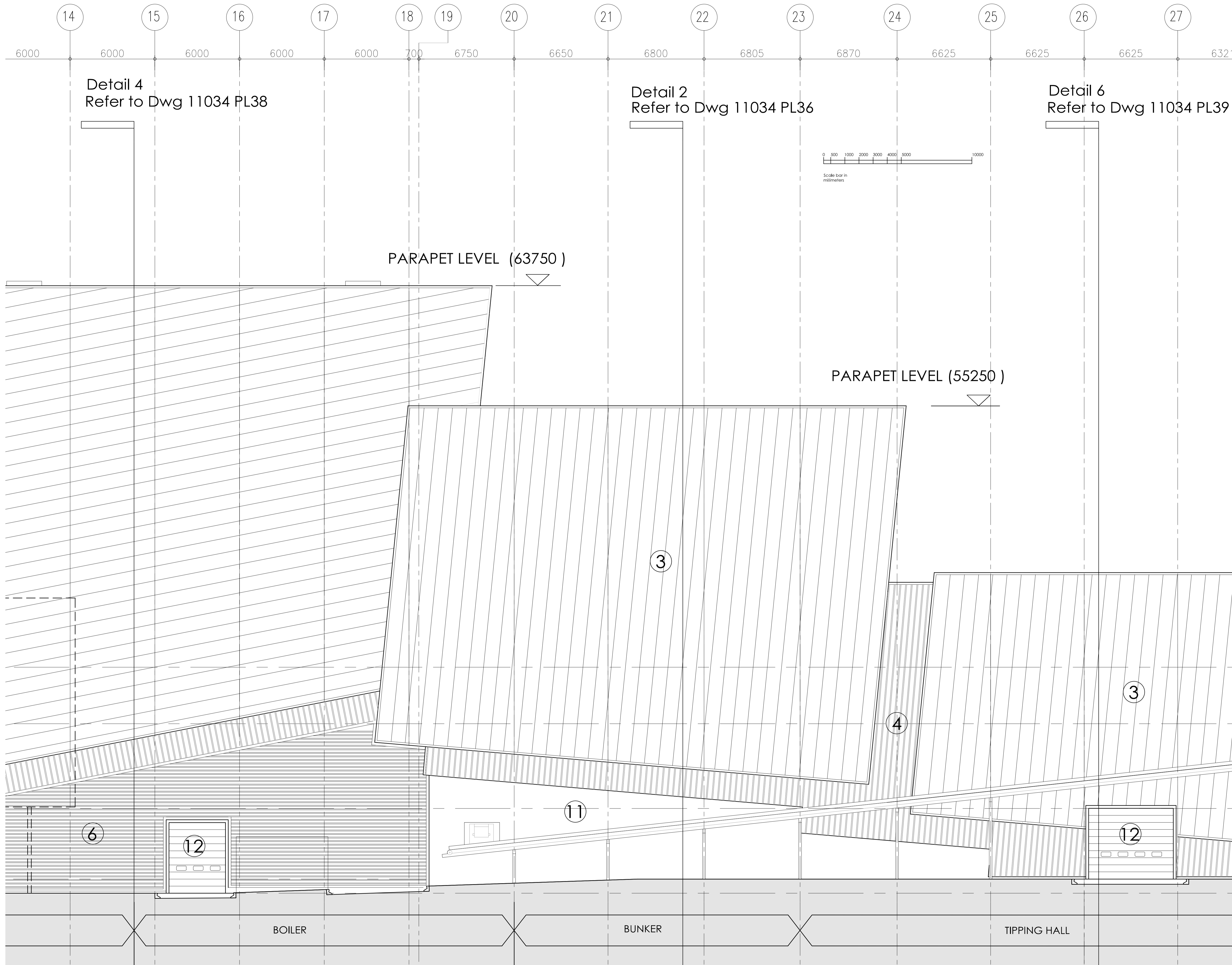
PLANNING

Revision	
Scale	1:125@A1
Status	P
Drawn by	PdeB
Date	10.05.11

Client
URBASER / BALFOUR BEATTY

Project
GLOUCESTERSHIRE RESIDUAL WASTE PROJECT
Drawing Description
SOUTH ELEVATION SECTOR 1
Drawing No. 11034 PL27 Rev.





General Notes

All site dimensions shall be verified by the Contractor on site prior to commencing any works.

Do not scale from this drawing.

Only work to written dimensions.

This drawing is the property of Fletcher-Rae (UK) Limited (t/a Fletcher-Rae) and copyright is reserved by them. The drawing is not to be copied or disclosed by or to any unauthorised persons without the prior written consent of Fletcher-Rae (UK) Limited.

- Schedule for cladding materials**
- Main cladding element to be Kingspan AWP KS1000 flat composite insulated cladding panel system. 1000mm module secret fixed laid at nominal 11 degrees incline to the vertical. Supported on secondary steel cladding rails set out in accordance with system requirements relative to specific application and site location and extent of exposure. Horizontal drip flashings to be incorporated at panel ends Colour RAL 7040.
 - Main cladding element to be Kingspan AWP KS1000 flat composite insulated cladding panel system. 1000mm module secret fixed laid at nominal 11 degrees incline to the horizontal. Supported on secondary steel cladding rails set out in accordance with system requirements relative to specific application and site location and extent of exposure. Vertical joints between panels to be set at 90 degrees (necessitating cut panels) and finished with proprietary top hat section External finish - Kingspan XL Forte 'Symphony Collection' Coating System Colour RAL 6021.
 - Main cladding element to be Kingspan AWP KS1000 flat composite insulated cladding panel system. 1000mm module secret fixed laid at nominal 9 degrees incline to the horizontal. Supported on secondary steel cladding rails set out in accordance with system requirements relative to specific application and site location and extent of exposure. Vertical joints between panels to be set at 90 degrees (necessitating cut panels) and finished with proprietary top hat section External finish - Kingspan XL Forte 'Symphony Collection' Coating System Colour RAL 6021.
 - Main cladding element to be Kingspan AWP KS1000 flat composite insulated cladding panel system. 1000mm module secret fixed laid at nominal 6 degrees incline to the vertical. Supported on secondary steel cladding rails set out in accordance with system requirements relative to specific application and site location and extent of exposure. Vertical joints between panels to be set at 90 degrees and finished with proprietary top hat section Colour RAL 7040.
 - Shadow cladding element between main elements and along lower edge of main element to be Kingspan KS profiled composite cladding panel system laid at nominal 6 degree incline to the vertical. Cut lapped horizontal jointing with exposed fixings. External finish - Kingspan XL Forte 'Symphony Collection' Coating System Colour RAL 7043.
 - Galvanised mesh planting framework to be mechanically secured to shadow cladding, on proprietary galvanised top hat sheeting rails spacing mesh from face of cladding. Mesh panels to be fully trimmed around perimeter with edging channel.
 - Overblade aluminium louvre to projecting soffit along north elevation. PPC finish with fly screen backing Colour RAL 7043.
 - Aluminium curtain wall glazing to gable end to each side and over the top of the central solid cladding. No requirement for opening lights. Frame to receive PPC finish to standard RAL colour 7043. Double glazing to be toughened both panes, nominal 6:12:6 glass and cavity thickness. Glass to be clear polished float glass.
 - FGT gable infill Main cladding element to be Kingspan AWP KS1000 flat composite insulated cladding panel system. 1000mm module secret fixed laid horizontal. Supported on secondary steel cladding rails set out in accordance with system requirements relative to specific application and site location and extent of exposure. Vertical joints between panels to be set at 90 degrees and finished with proprietary top hat section Colour RAL 6021.
 - Condenser screening Main cladding element to be Kingspan AWP KS1000 flat composite insulated cladding panel system. 1000mm module secret fixed laid at horizontal Colour RAL 6021.
 - Translucent cladding, (Rodecca or similar).
 - Fair faced concrete.
 - PPC insulated panel door Colour RAL 1023.
 - PPC metal faced personnel / access doors Colour RAL 1023.
- Exhaust stack and fuel tanks to be galvanised steel

PLANNING

Revision		
Scale	1:125@A1	
Status	P	
Drawn by	PdeB	
Date	10.05.11	
Client	URBASER / BALFOUR BEATTY	
Project	GLOUCESTERSHIRE RESIDUAL WASTE PROJECT	
Drawing Description	SOUTH ELEVATION SECTOR 2	
Drawing No.	11034 PL28	Rev. C

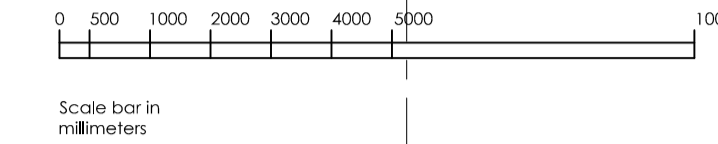


Architecture | Master Planning | Project Management

Hill Quays, 5 Jordan Street, Manchester, M15 4PY

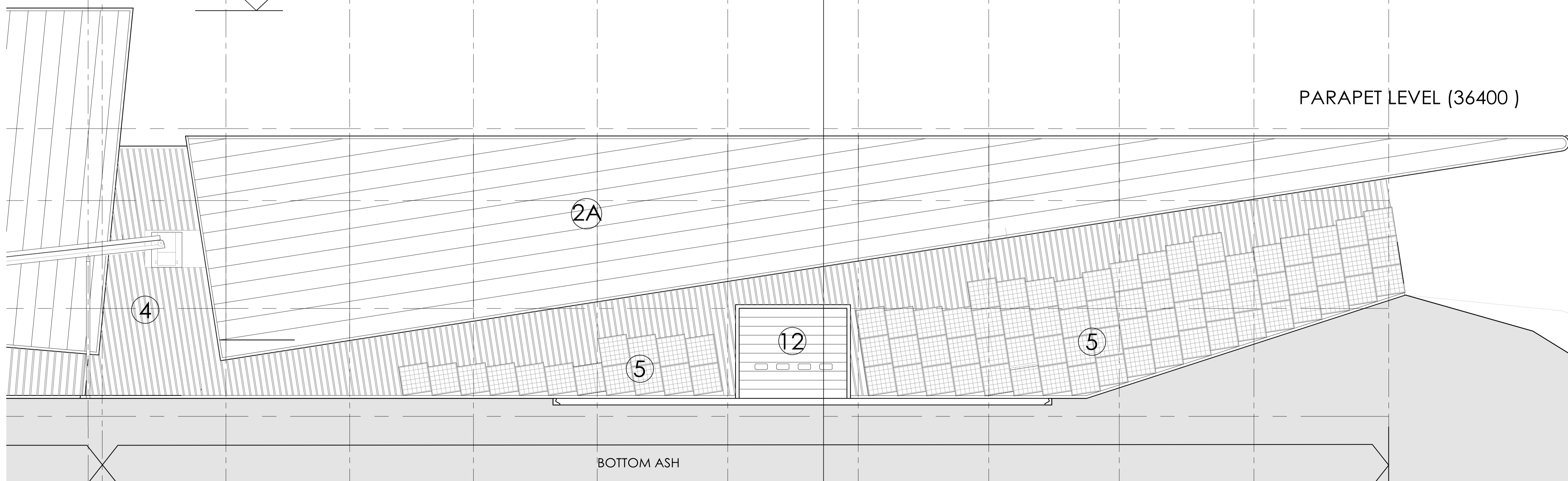
t +44 (0)161 242 1140
w www.fletcher-rae.com
f +44 (0)161 242 1141
e info@fletcher-rae.com

Detail 1
Refer to Dwg 11034 PL35



PARAPET LEVEL (42825)

PARAPET LEVEL (36400)



General Notes

All site dimensions shall be verified by the Contractor on site prior to commencing any works.

Do not scale from this drawing.

Only work to written dimensions.

This drawing is the property of Fletcher-Rae (UK) Limited (t/a Fletcher-Rae) and copyright is reserved by them. The drawing is not to be copied or disclosed by or to any unauthorised persons without the prior written consent of Fletcher-Rae (UK) Limited.

Schedule for cladding materials

1. Main cladding element to be Kingspan AWP KS1000 flat composite insulated cladding panel system. 1000mm module secret fixed laid at nominal 11 degrees incline to the vertical. Supported on secondary steel cladding rails set out in accordance with system requirements relative to specific application and site location and extent of exposure. Horizontal drip flashings to be incorporated at panel ends Colour RAL 7040.
 2. Main cladding element to be Kingspan AWP KS1000 flat composite insulated cladding panel system. 1000mm module secret fixed laid at nominal 11 degrees incline to the horizontal. Supported on secondary steel cladding rails set out in accordance with system requirements relative to specific application and site location and extent of exposure. Vertical joints between panels to be set at 90 degrees (necessitating cut panels) and finished with proprietary top hat section External finish - Kingspan XL Forte 'Symphony Collection' Coating System Colour RAL 6021.
 - 2A. Main cladding element to be Kingspan AWP KS1000 flat composite insulated cladding panel system. 1000mm module secret fixed laid at nominal 9 degrees incline to the horizontal. Supported on secondary steel cladding rails set out in accordance with system requirements relative to specific application and site location and extent of exposure. Vertical joints between panels to be set at 90 degrees (necessitating cut panels) and finished with proprietary top hat section External finish - Kingspan XL Forte 'Symphony Collection' Coating System Colour RAL 6021.
 3. Main cladding element to be Kingspan AWP KS1000 flat composite insulated cladding panel system. 1000mm module secret fixed laid at nominal 6 degrees incline to the vertical. Supported on secondary steel cladding rails set out in accordance with system requirements relative to specific application and site location and extent of exposure. Vertical joints between panels to be set at 90 degrees and finished with proprietary top hat section Colour RAL 7040.
 4. Shadow cladding element between main elements and along lower edge of main element to be Kingspan KS profiled composite cladding panel system laid at nominal 6 degree incline to the vertical. Cut lapped horizontal jointing with exposed fixings. External finish - Kingspan XL Forte 'Symphony Collection' Coating System Colour RAL 7043.
 5. Galvanised mesh planting framework to be mechanically secured to shadow cladding, on proprietary galvanised top hat sheeting rails spacing mesh from face of cladding. Mesh panels to be fully trimmed around perimeter with edging channel.
 6. Overblade aluminium louvre to projecting soffit along north elevation. PPC finish with fly screen backing Colour RAL 7043.
 7. Aluminium curtain wall glazing to gable end to each side and over the top of the central solid cladding. No requirement for opening lights. Frame to receive PPC finish to standard RAL colour 7043. Double glazing to be toughened both panes, nominal 6:12:6 glass and cavity thickness. Glass to be clear polished float glass.
 8. FGT gable infill Main cladding element to be Kingspan AWP KS1000 flat composite insulated cladding panel system. 1000mm module secret fixed laid horizontal. Supported on secondary steel cladding rails set out in accordance with system requirements relative to specific application and site location and extent of exposure. Vertical joints between panels to be set at 90 degrees and finished with proprietary top hat section Colour RAL 6021.
 9. Condenser screening Main cladding element to be Kingspan AWP KS1000 flat composite insulated cladding panel system. 1000mm module secret fixed laid at horizontal Colour RAL 6021.
 10. Translucent cladding, (Rodecca or similar).
 11. Fair faced concrete.
 12. PPC insulated panel door Colour RAL 1023.
 13. PPC metal faced personnel / access doors Colour RAL 1023.
- Exhaust stack and fuel tanks to be galvanised steel

PLANNING

Revision	
Scale	1:125@A1
Status	P
Drawn by	PdeB
Date	10.05.11

Client
URBASER / BALFOUR BEATTY

Project
GLOUCESTERSHIRE RESIDUAL
WASTE PROJECT
Drawing Description
SOUTH ELEVATION
SECTOR 3

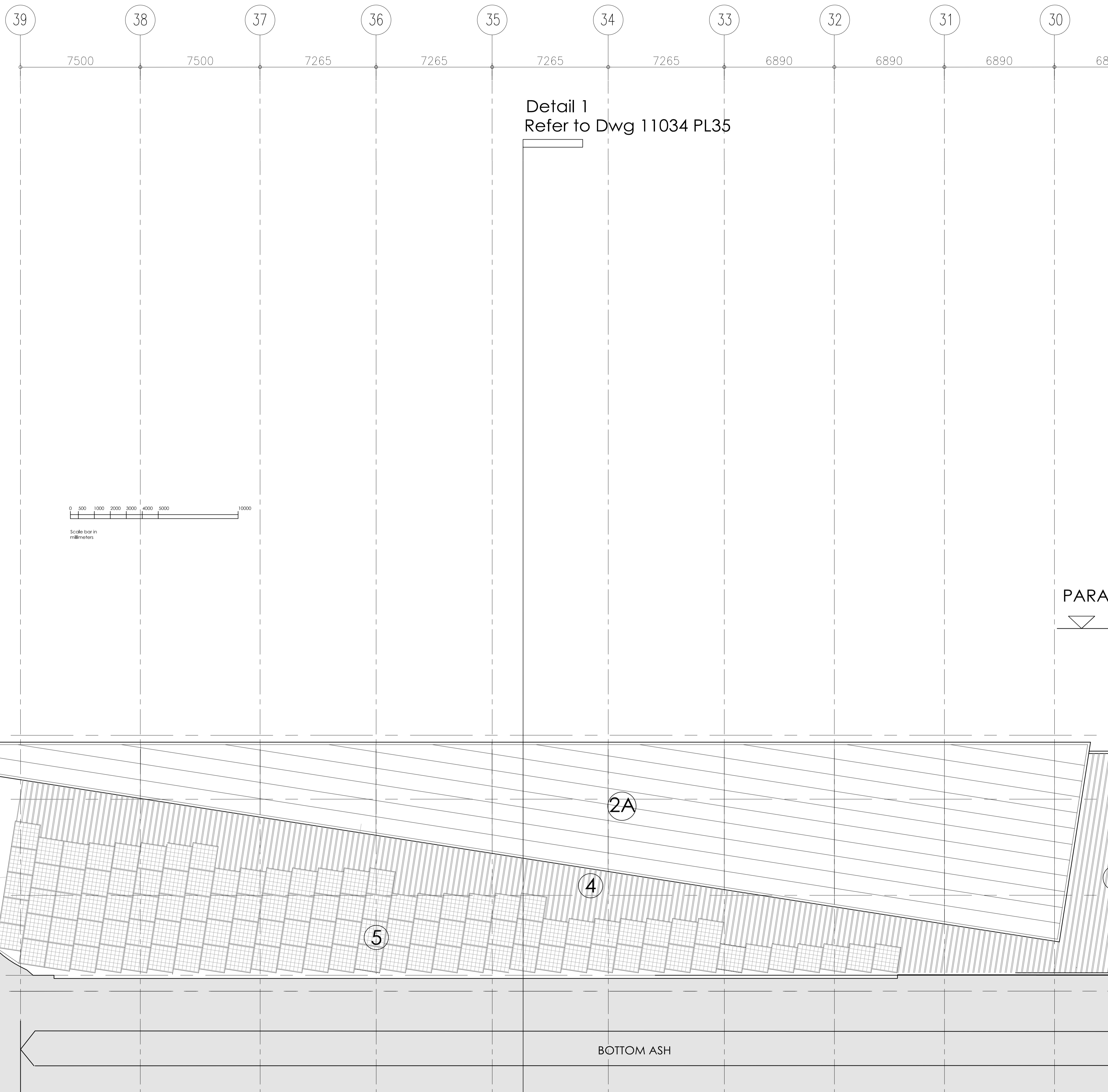
Drawing No. 11034 PL29 Rev.



Architecture | Master Planning | Project Management

Hill Quays, 5 Jordan Street, Manchester, M15 4PY

t +44 (0)161 242 1140
w www.fletcher-rae.com
f +44 (0)161 242 1141
e info@fletcher-rae.com



Detail 1
Refer to Dwg 11034 PL35

General Notes

All site dimensions shall be verified by the Contractor on site prior to commencing any works.

Do not scale from this drawing.

Only work to written dimensions.

This drawing is the property of Fletcher-Rae (UK) Limited (t/a Fletcher-Rae) and copyright is reserved by them. The drawing is not to be copied or disclosed by or to any unauthorised persons without the prior written consent of Fletcher-Rae (UK) Limited.

- Schedule for cladding materials**
1. Main cladding element to be Kingspan AWP KS1000 flat composite insulated cladding panel system. 1000mm module secret fixed laid at nominal 11 degrees incline to the vertical. Supported on secondary steel cladding rails set out in accordance with system requirements relative to specific application and site location and extent of exposure. Horizontal drip flashings to be incorporated at panel ends Colour RAL 7040.
 2. Main cladding element to be Kingspan AWP KS1000 flat composite insulated cladding panel system. 1000mm module secret fixed laid at nominal 11 degrees incline to the horizontal. Supported on secondary steel cladding rails set out in accordance with system requirements relative to specific application and site location and extent of exposure. Vertical joints between panels to be set at 90 degrees (necessitating cut panels) and finished with proprietary top hat section External finish - Kingspan XL Forte 'Symphony Collection' Coating System Colour RAL 6021.
 - 2A. Main cladding element to be Kingspan AWP KS1000 flat composite insulated cladding panel system. 1000mm module secret fixed laid at nominal 9 degrees incline to the horizontal. Supported on secondary steel cladding rails set out in accordance with system requirements relative to specific application and site location and extent of exposure. Vertical joints between panels to be set at 90 degrees (necessitating cut panels) and finished with proprietary top hat section External finish - Kingspan XL Forte 'Symphony Collection' Coating System Colour RAL 6021.
 3. Main cladding element to be Kingspan AWP KS1000 flat composite insulated cladding panel system. 1000mm module secret fixed laid at nominal 6 degrees incline to the vertical. Supported on secondary steel cladding rails set out in accordance with system requirements relative to specific application and site location and extent of exposure. Vertical joints between panels to be set at 90 degrees and finished with proprietary top hat section Colour RAL 7040.
 4. Shadow cladding element between main elements and along lower edge of main element to be Kingspan KS profiled composite cladding panel system laid at nominal 6 degree incline to the vertical. Cut lapped horizontal jointing with exposed fixings. External finish - Kingspan XL Forte 'Symphony Collection' Coating System Colour RAL 7043.
 5. Galvanised mesh planting framework to be mechanically secured to shadow cladding, on proprietary galvanised top hat sheeting rails spacing mesh from face of cladding. Mesh panels to be fully trimmed around perimeter with edging channel.
 6. Overblade aluminium louvre to projecting soffit along north elevation. PPC finish with fly screen backing Colour RAL 7043.
 7. Aluminium curtain wall glazing to gable end to each side and over the top of the central solid cladding. No requirement for opening lights. Frame to receive PPC finish to standard RAL colour 7043. Double glazing to be toughened both panes, nominal 6:12:6 glass and cavity thickness. Glass to be clear polished float glass.
 8. FGT gable infill Main cladding element to be Kingspan AWP KS1000 flat composite insulated cladding panel system. 1000mm module secret fixed laid horizontal. Supported on secondary steel cladding rails set out in accordance with system requirements relative to specific application and site location and extent of exposure. Vertical joints between panels to be set at 90 degrees and finished with proprietary top hat section Colour RAL 6021.
 9. Condenser screening Main cladding element to be Kingspan AWP KS1000 flat composite insulated cladding panel system. 1000mm module secret fixed laid at horizontal Colour RAL 6021.
 10. Translucent cladding, (Rodecca or similar).
 11. Fair faced concrete.
 12. PPC insulated panel door Colour RAL 1023.
 13. PPC metal faced personnel / access doors Colour RAL 1023.
- Exhaust stack and fuel tanks to be galvanised steel

PLANNING

Revision

Scale 1:125@A1

Status P

Drawn by PdeB

Date 10.05.11

Client
URBASER / BALFOUR BEATTY

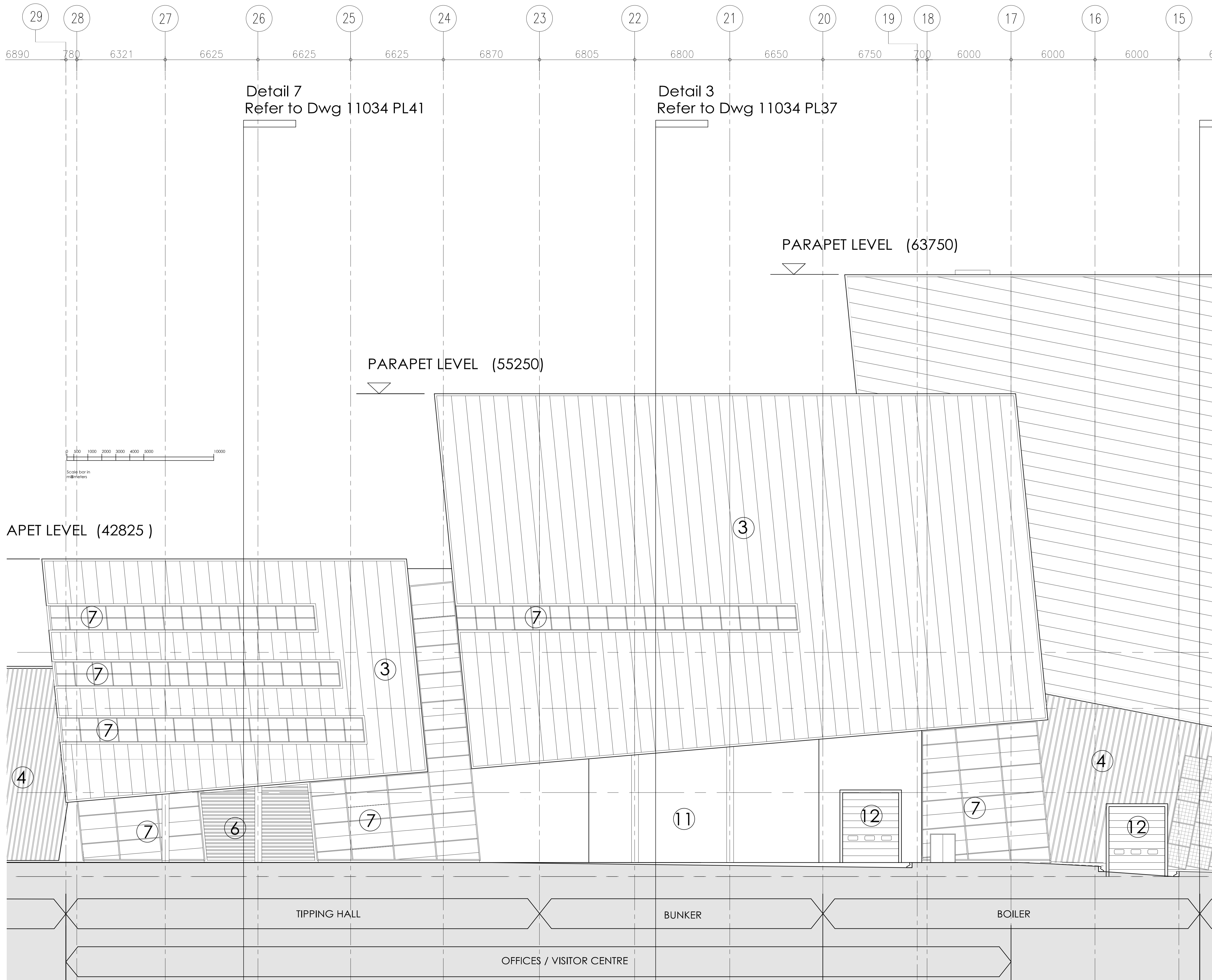
Project
GLOUCESTERSHIRE RESIDUAL
WASTE PROJECT
Drawing Description
NORTH ELEVATION
SECTOR 1
Drawing No. 11034 PL30 Rev.



Architecture | Master Planning | Project Management

Hill Quays, 5 Jordan Street, Manchester, M15 4PY

t +44 (0)161 242 1140
w www.fletcher-rae.com
f +44 (0)161 242 1141
e info@fletcher-rae.com



General Notes

All site dimensions shall be verified by the Contractor on site prior to commencing any works.

Do not scale from this drawing.

Only work to written dimensions.

This drawing is the property of Fletcher-Rae (UK) Limited (t/a Fletcher-Rae) and copyright is reserved by them. The drawing is not to be copied or disclosed by or to any unauthorised persons without the prior written consent of Fletcher-Rae (UK) Limited.

- Schedule for cladding materials
1. Main cladding element to be Kingspan AWP KS1000 flat composite insulated cladding panel system. 1000mm module secret fixed laid at nominal 11 degrees incline to the vertical. Supported on secondary steel cladding rails set out in accordance with system requirements relative to specific application and site location and extent of exposure. Horizontal drip flashings to be incorporated at panel ends Colour RAL 7040.
 2. Main cladding element to be Kingspan AWP KS1000 flat composite insulated cladding panel system. 1000mm module secret fixed laid at nominal 11 degrees incline to the horizontal. Supported on secondary steel cladding rails set out in accordance with system requirements relative to specific application and site location and extent of exposure. Vertical joints between panels to be set at 90 degrees (necessitating cut panels) and finished with proprietary top hat section External finish - Kingspan XL Forte 'Symphony Collection' Coating System Colour RAL 6021.
 - 2A. Main cladding element to be Kingspan AWP KS1000 flat composite insulated cladding panel system. 1000mm module secret fixed laid at nominal 9 degrees incline to the horizontal. Supported on secondary steel cladding rails set out in accordance with system requirements relative to specific application and site location and extent of exposure. Vertical joints between panels to be set at 90 degrees (necessitating cut panels) and finished with proprietary top hat section External finish - Kingspan XL Forte 'Symphony Collection' Coating System Colour RAL 6021.
 3. Main cladding element to be Kingspan AWP KS1000 flat composite insulated cladding panel system. 1000mm module secret fixed laid at nominal 6 degrees incline to the vertical. Supported on secondary steel cladding rails set out in accordance with system requirements relative to specific application and site location and extent of exposure. Vertical joints between panels to be set at 90 degrees and finished with proprietary top hat section Colour RAL 7040.
 4. Shadow cladding element between main elements and along lower edge of main element to be Kingspan KS profiled composite cladding panel system laid at nominal 6 degree incline to the vertical. Cut lapped horizontal jointing with exposed fixings. External finish - Kingspan XL Forte 'Symphony Collection' Coating System Colour RAL 7043.
 5. Galvanised mesh planting framework to be mechanically secured to shadow cladding, on proprietary galvanised top hat sheeting rails spacing mesh from face of cladding. Mesh panels to be fully trimmed around perimeter with edging channel.
 6. Overblade aluminium louvre to projecting soffit along north elevation. PPC finish with fly screen backing Colour RAL 7043.
 7. Aluminium curtain wall glazing to gable end to each side and over the top of the central solid cladding. No requirement for opening lights. Frame to receive PPC finish to standard RAL colour 7043. Double glazing to be toughened both panes, nominal 6:12:6 glass and cavity thickness. Glass to be clear polished float glass.
 8. FGT gable infill Main cladding element to be Kingspan AWP KS1000 flat composite insulated cladding panel system. 1000mm module secret fixed laid horizontal. Supported on secondary steel cladding rails set out in accordance with system requirements relative to specific application and site location and extent of exposure. Vertical joints between panels to be set at 90 degrees and finished with proprietary top hat section Colour RAL 6021.
 9. Condenser screening Main cladding element to be Kingspan AWP KS1000 flat composite insulated cladding panel system. 1000mm module secret fixed laid at horizontal Colour RAL 6021.
 10. Translucent cladding, (Rodecca or similar).
 11. Fair faced concrete.
 12. PPC insulated panel door Colour RAL 1023.
 13. PPC metal faced personnel / access doors Colour RAL 1023.
- Exhaust stack and fuel tanks to be galvanised steel

PLANNING

Revision

Scale 1:125@A1

Status P

Drawn by PdeB

Date 10.05.11

Client
URBASER / BALFOUR BEATTY

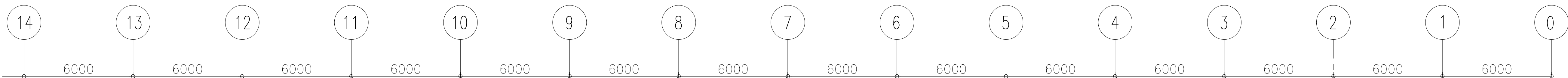
Project
GLOUCESTERSHIRE RESIDUAL
WASTE PROJECT
Drawing Description
SOUTH ELEVATION
SECTOR 2
Drawing No. 11034 PL31 Rev.



Architecture | Master Planning | Project Management

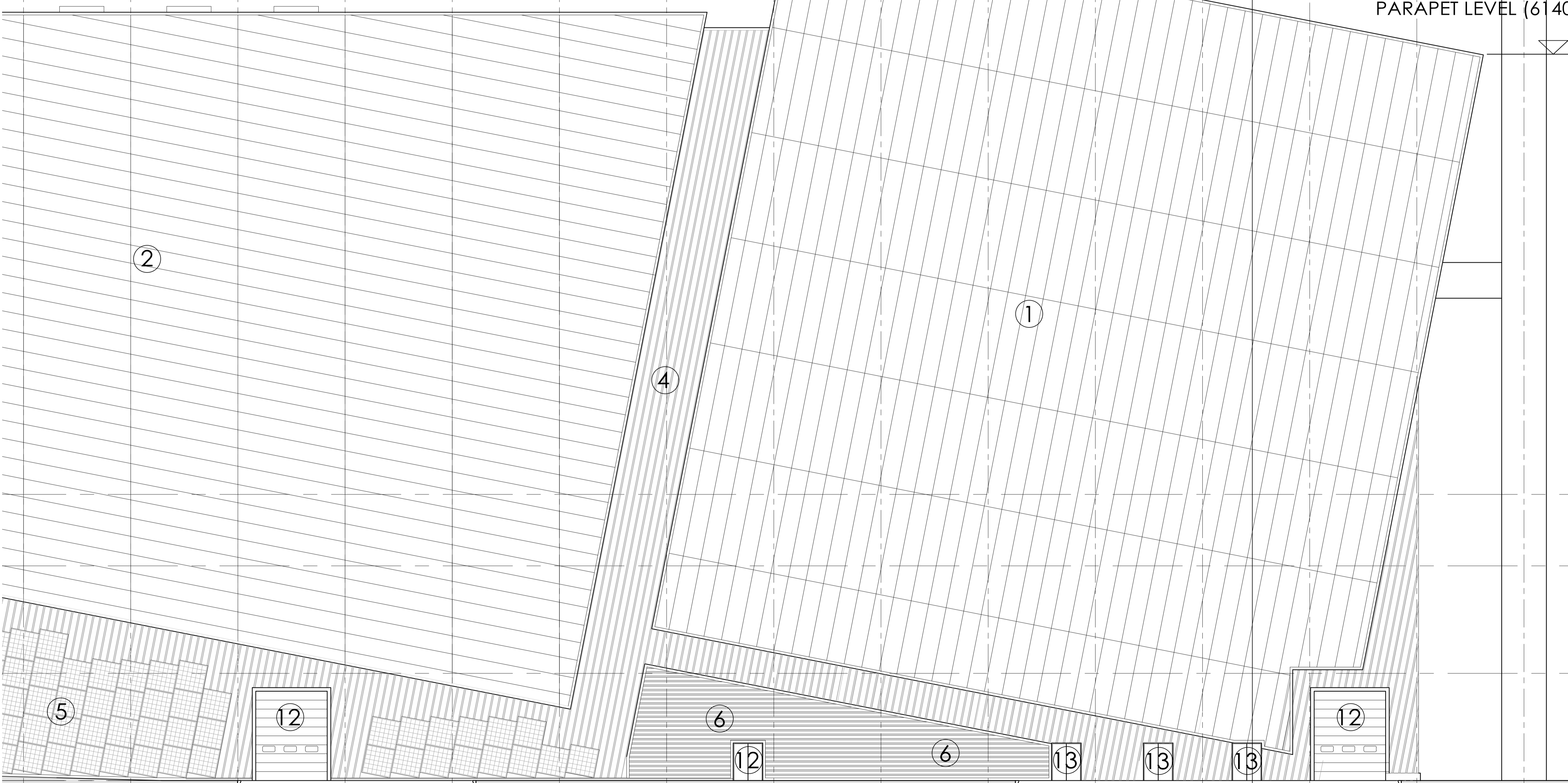
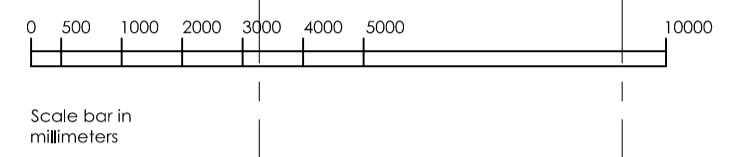
Hill Quays, 5 Jordan Street, Manchester, M15 4PY

t +44 (0)161 242 1140
w www.fletcher-rae.com
f +44 (0)161 242 1141
e info@fletcher-rae.com



Detail 4
Refer to Dwg
11034 PL34

Detail 5
Refer to Dwg 11034 PL39



General Notes

All site dimensions shall be verified by the Contractor on site prior to commencing any works.

Do not scale from this drawing.

Only work to written dimensions.

This drawing is the property of Fletcher-Rae (UK) Limited (t/a Fletcher-Rae) and copyright is reserved by them. The drawing is not to be copied or disclosed by or to any unauthorised persons without the prior written consent of Fletcher-Rae (UK) Limited.

- Schedule for cladding materials
1. Main cladding element to be Kingspan AWP KS1000 flat composite insulated cladding panel system. 1000mm module secret fixed laid at nominal 11 degrees incline to the vertical. Supported on secondary steel cladding rails set out in accordance with system requirements relative to specific application and site location and extent of exposure. Horizontal drip flashings to be incorporated at panel ends Colour RAL 7040.
 2. Main cladding element to be Kingspan AWP KS1000 flat composite insulated cladding panel system. 1000mm module secret fixed laid at nominal 11 degrees incline to the horizontal. Supported on secondary steel cladding rails set out in accordance with system requirements relative to specific application and site location and extent of exposure. Vertical joints between panels to be set at 90 degrees (necessitating cut panels) and finished with proprietary top hat section External finish - Kingspan XL Forte 'Symphony Collection' Coating System Colour RAL 6021.
 - 2A. Main cladding element to be Kingspan AWP KS1000 flat composite insulated cladding panel system. 1000mm module secret fixed laid at nominal 9 degrees incline to the horizontal. Supported on secondary steel cladding rails set out in accordance with system requirements relative to specific application and site location and extent of exposure. Vertical joints between panels to be set at 90 degrees (necessitating cut panels) and finished with proprietary top hat section External finish - Kingspan XL Forte 'Symphony Collection' Coating System Colour RAL 6021.
 3. Main cladding element to be Kingspan AWP KS1000 flat composite insulated cladding panel system. 1000mm module secret fixed laid at nominal 6 degrees incline to the vertical. Supported on secondary steel cladding rails set out in accordance with system requirements relative to specific application and site location and extent of exposure. Vertical joints between panels to be set at 90 degrees and finished with proprietary top hat section Colour RAL 7040.
 4. Shadow cladding element between main elements and along lower edge of main element to be Kingspan KS profiled composite cladding panel system laid at nominal 6 degree incline to the vertical. Cut lapped horizontal jointing with exposed fixings. External finish - Kingspan XL Forte 'Symphony Collection' Coating System Colour RAL 7043.
 5. Galvanised mesh planting framework to be mechanically secured to shadow cladding, on proprietary galvanised top hat sheeting rails spacing mesh from face of cladding. Mesh panels to be fully trimmed around perimeter with edging channel.
 6. Overblade aluminium louvre to projecting soffit along north elevation. PPC finish with fly screen backing Colour RAL 7043.
 7. Aluminium curtain wall glazing to gable end to each side and over the top of the central solid cladding. No requirement for opening lights. Frame to receive PPC finish to standard RAL colour 7043. Double glazing to be toughened both panes, nominal 6:12:6 glass and cavity thickening. Glass to be clear polished float glass.
 8. FGT gable infill Main cladding element to be Kingspan AWP KS1000 flat composite insulated cladding panel system. 1000mm module secret fixed laid horizontal. Supported on secondary steel cladding rails set out in accordance with system requirements relative to specific application and site location and extent of exposure. Vertical joints between panels to be set at 90 degrees and finished with proprietary top hat section Colour RAL 6021.
 9. Condenser screening Main cladding element to be Kingspan AWP KS1000 flat composite insulated cladding panel system. 1000mm module secret fixed laid at horizontal Colour RAL 6021.
 10. Translucent cladding, (Rodecca or similar).
 11. Fair faced concrete.
 12. PPC insulated panel door Colour RAL 1023.
 13. PPC metal faced personnel / access doors Colour RAL 1023.
- Exhaust stack and fuel tanks to be galvanised steel

PLANNING

Revision	/
Scale	1:125@A1
Status	P
Drawn by	PdeB
Date	10.05.11
Client	URBASER / BALFOUR BEATTY
Project	GLOUCESTERSHIRE RESIDUAL WASTE PROJECT
Drawing Description	SOUTH ELEVATION SECTOR 3
Drawing No.	11034 PL32
Rev.	



Architecture | Master Planning | Project Management

Hill Quays, 5 Jordan Street, Manchester, M15 4PY

t +44 (0)161 242 1140
w www.fletcher-rae.com
f +44 (0)161 242 1141
e info@fletcher-rae.com

CONDENSER ROOM

ANCILLARY ACCOMMODATION

MECHANICAL WORKSHOP

RESIDUAL DISCHARGE