

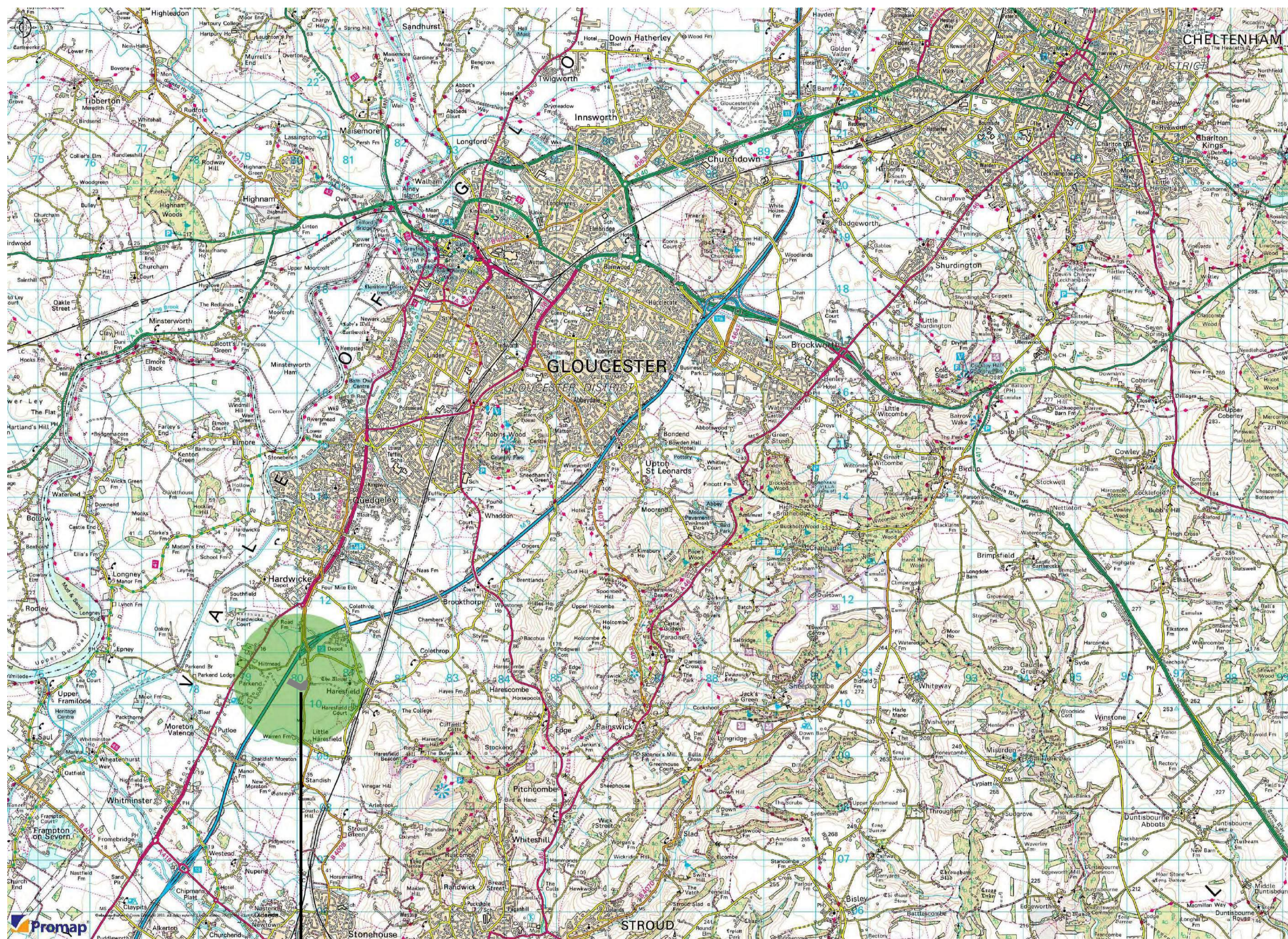
**General Notes**

All site dimensions shall be verified by the Contractor on site prior to commencing any works.

Do not scale from this drawing.

Only work to written dimensions.

This drawing is the property of Fletcher-Rae (UK) Limited (t/a Fletcher-Rae) and copyright is reserved by them. The drawing is not to be copied or disclosed by or to any unauthorised persons without the prior written consent of Fletcher-Rae (UK) Limited.



# PROPOSED DEVELOPMENT SITE AT JAVELIN PARK

Revision

Scale 1:50000@A1 / 1:100000@A3

Status PL

Drawn by AL

Date 19.09.11

Client  
**URBASER**

Project  
**GLOUCESTERSHIRE RESIDUAL  
WASTE PROJECT**  
Drawing Description  
**SITE CONTEXT PLAN**

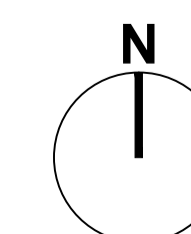
Drawing No. 11034-PL01 Rev.

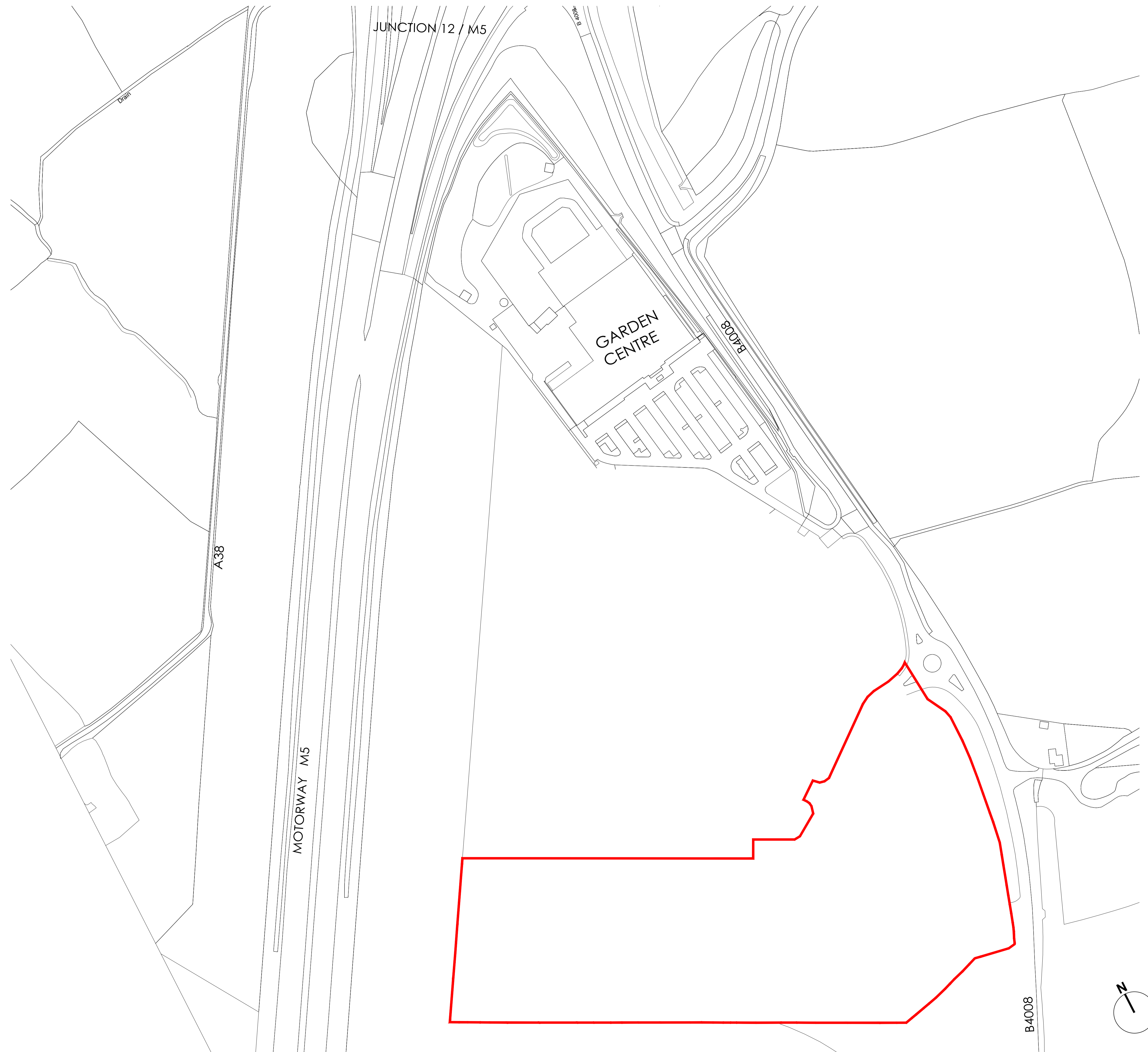


Architecture | Master Planning | Project Management

Hill Quays, 5 Jordan Street, Manchester, M15 4PY

t +44 (0)161 242 1140  
w www.fletcher-rae.com  
f +44 (0)161 242 1141  
e info@fletcher-rae.com





**General Notes**

All site dimensions shall be verified by the Contractor on site prior to commencing any works.

Do not scale from this drawing.

Only work to written dimensions.

This drawing is the property of Fletcher-Rae (UK) Limited (t/a Fletcher-Rae) and copyright is reserved by them. The drawing is not to be copied or disclosed by or to any unauthorised persons without the prior written consent of Fletcher-Rae (UK) Limited.

## PLANNING

Revision

Scale 1:1250@A1/1:2500@A3

Status PL

Drawn by AL

Date 19.09.11

Client  
**URBASER / BALFOUR BEATTY**

Project  
**GLOUCESTERSHIRE RESIDUAL WASTE PROJECT**  
 Drawing Description  
**PLANNING BOUNDARY PLAN**

Drawing No. 11034-PL02 Rev.



**Architecture | Master Planning | Project Management**

Hill Quays, 5 Jordan Street, Manchester, M15 4PY

t ■ +44 (0)161 242 1140  
 w ■ www.fletcher-rae.com  
 f ■ +44 (0)161 242 1141  
 e ■ info@fletcher-rae.com

**KEY**

- Proposed 2.4m High Paladin Security Fencing - Colour: Green (TBC)  
Personnel Gate Incorporated into Secure Fence Line
- Proposed 2.4m High Paladin Security Fencing with Lightweight  
Fabric Screening (or similar) - Colour: Green (TBC)  
Vehicular and Personnel Gates Incorporated into Secure Fence Line
- Existing Fence Line To Be Retained
- Close Mown Grass
- Conservation Grassland
- New Native Scrub
- Retained Existing Vegetation
- New Native Woodland
- Ornamental Shrub Planting
- Specimen Trees
- Hedgerows
- Tarmac Road
- Tarmac Footpath
- Block Paving to Pedestrian Areas
- Block Paving Car Parking
- High Quality Recycled Aggregate Pavings

**CONSENTED B8 DEVELOPMENT SITE**

**General Notes**

All site dimensions shall be verified by the Contractor on site prior to commencing any works.  
Do not scale from this drawing.  
Only work to written dimensions.  
This drawing is the property of Fletcher-Rae (UK) Limited (t/a Fletcher-Rae) and copyright is reserved by them. The drawing is not to be copied or disclosed by or to any unauthorised persons without the prior written consent of Fletcher-Rae (UK) Limited.



**PLANNING**

Revision  
Scale 1:500@A1/1:1000@A3  
Status PL  
Drawn by PdeB  
Date 19.09.11

Client  
**URBASER / BALFOUR BEATTY**

Project  
**GLOUCESTERSHIRE RESIDUAL WASTE PROJECT**  
Drawing Description  
**PROPOSED SITE PLAN**

Drawing No. 11034-PL04 Rev.



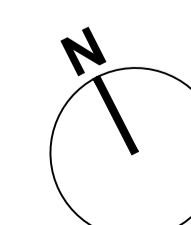
Architecture | Master Planning | Project Management  
Hill Quays, 5 Jordan Street, Manchester, M15 4PY  
t +44 (0)161 242 1140  
w www.fletcher-rae.com  
f +44 (0)161 242 1141  
e info@fletcher-rae.com

NOTES:  
ALL LEVELS SHOWN FINISHED LEVELS RELATING TO OS DATUM

FOR BOUNDARY GATE AND FENCE DETAILS SEE DRAWING 11034 PL12

THE ILLUSTRATED LANDSCAPING IS INDICATIVE ONLY REFER TO DRAWING GCC-ISRS-LAN-942-03-01 FOR DETAILED LANDSCAPING SCHEME AND SURFACING MATERIALS / FINISHES

**AGRICULTURAL LAND**



Section Legend:	
<b>A</b>	Auxiliary
<b>B</b>	Turbine Hall/Condensers
<b>C</b>	Main Process Equipment
<b>D</b>	Bunker
<b>E</b>	Tipping Hall
<b>F</b>	Bottom Ash
<b>G</b>	Staff Welfare/WC
<b>J</b>	Underground Water tank
<b>V</b>	Verticals
<b>L</b>	Lecture Theatre
<b>V</b>	Visitor Caravan
<b>O</b>	Office
<b>S</b>	Staff Room/Caravan
<b>C</b>	Control Room
<b>T</b>	Toilet
<b>Ch</b>	Changing Rooms
<b>A</b>	Auxiliary
<b>C</b>	Circulation
<b>St</b>	Stair / Lift Core
<b>PA</b>	Plant Areas/Store

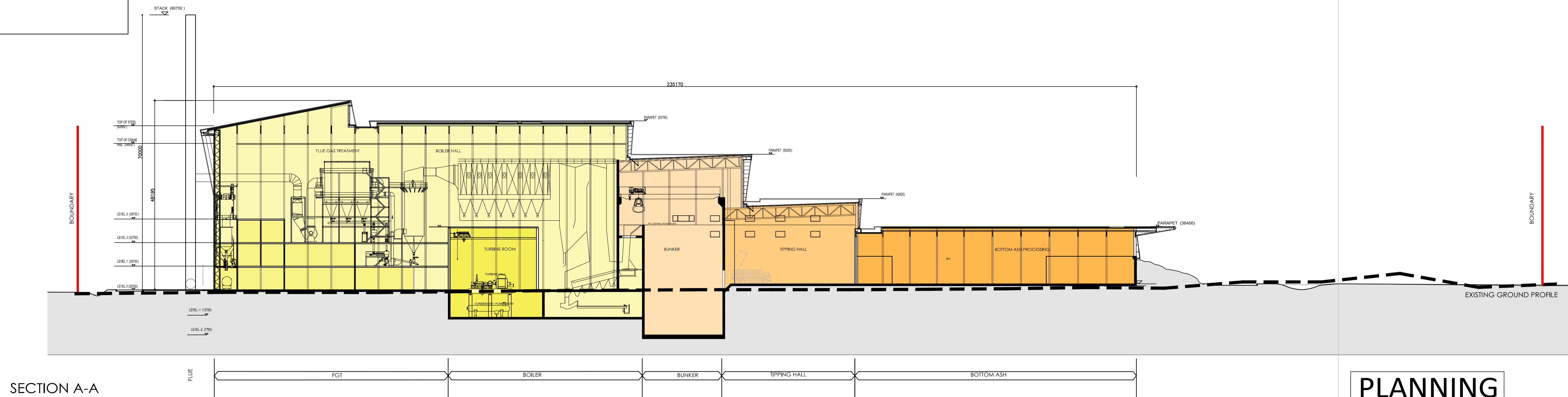
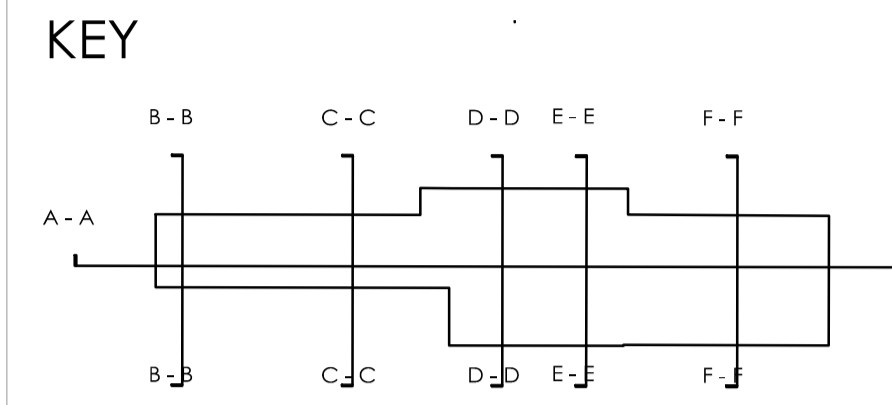
**General Notes**

All site dimensions shall be verified by the Contractor on site prior to commencing any works.

Do not scale from this drawing.

Only work to written dimensions.

This drawing is the property of Fletcher-Rae (UK) Limited (t/a Fletcher-Rae) and copyright is reserved by them. The drawing is not to be copied or disclosed by or to any unauthorised persons without the prior written consent of Fletcher-Rae (UK) Limited.



SECTION A-A

# PLANNING

Revision

Scale 1:500@A1/1:1000@A3

Status PL

Drawn by AL

Date 19.09.11

Client  
URBASER / BALFOUR BEATTY

Project  
GLOUCESTERSHIRE RESIDUAL  
WASTE PROJECT  
Drawing Description  
LONGITUDINAL SECTION

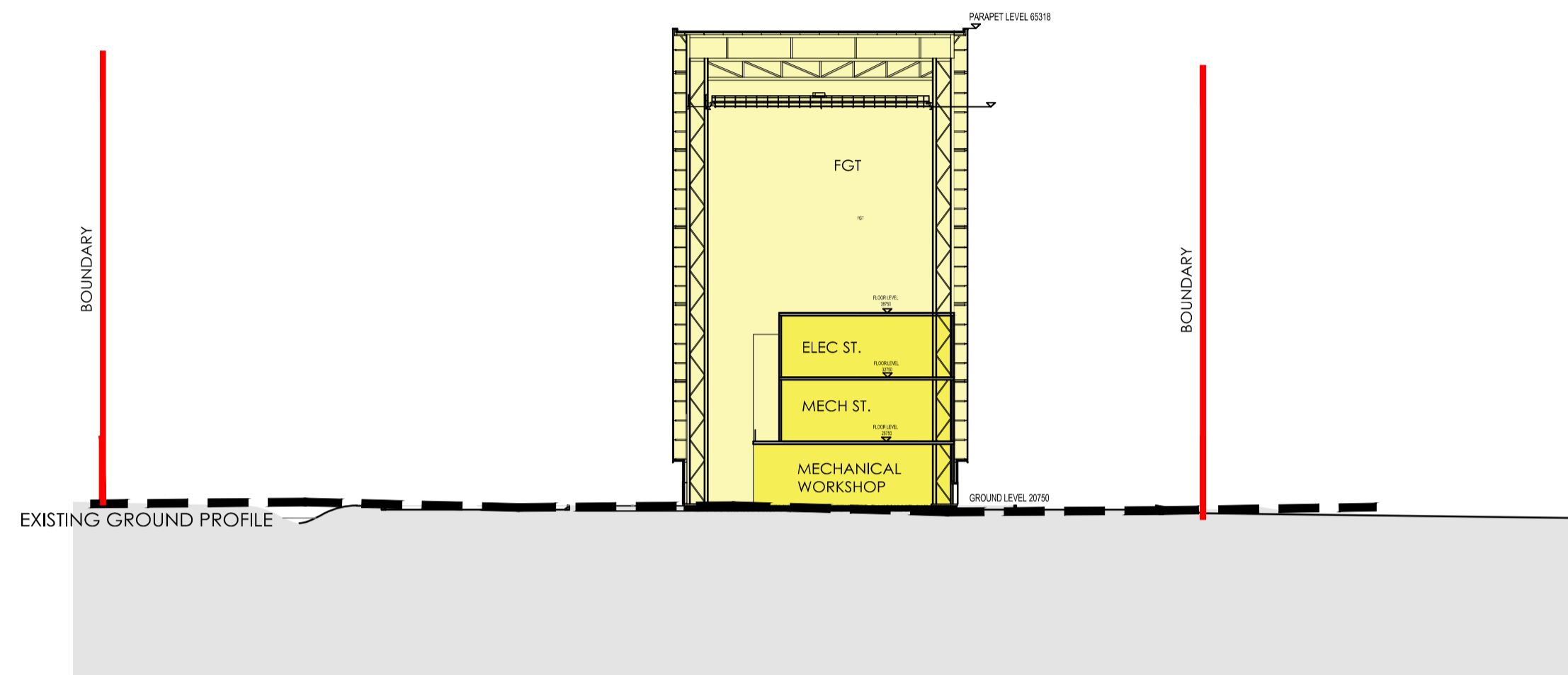
Drawing No. 11034-PL08 Rev.



Architecture | Master Planning | Project Management

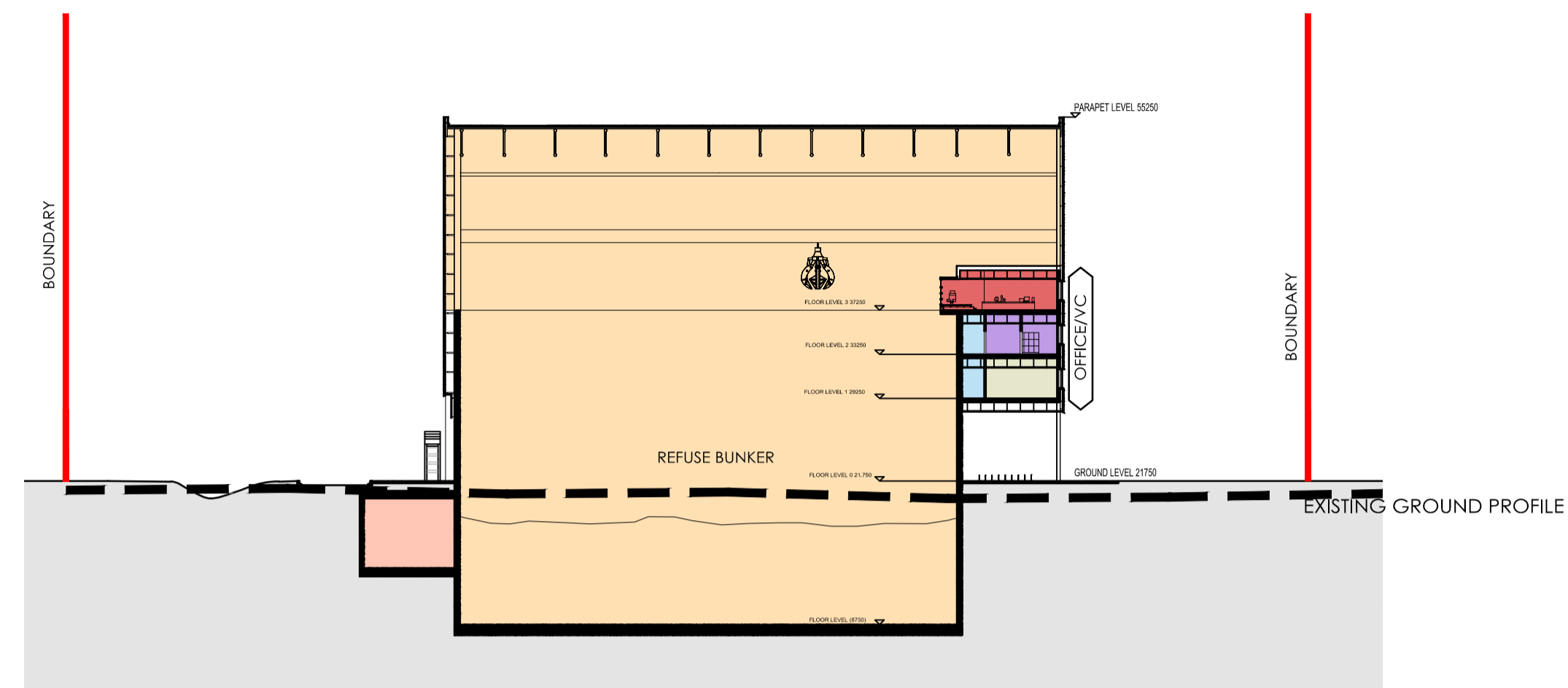
Hill Quays, 5 Jordan Street, Manchester, M15 4PY

t +44 (0)161 242 1140  
w www.fletcher-rae.com  
f +44 (0)161 242 1141  
e info@fletcher-rae.com



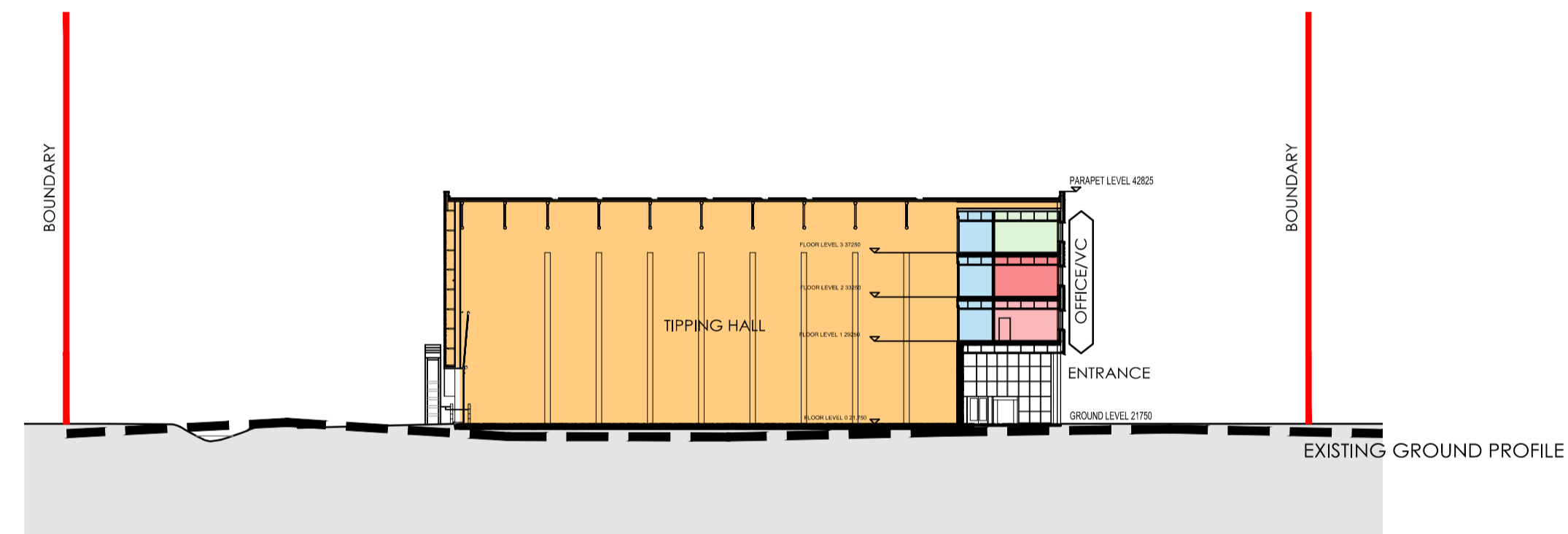
SECTION B-B

SECTION THROUGH FGT ROOM



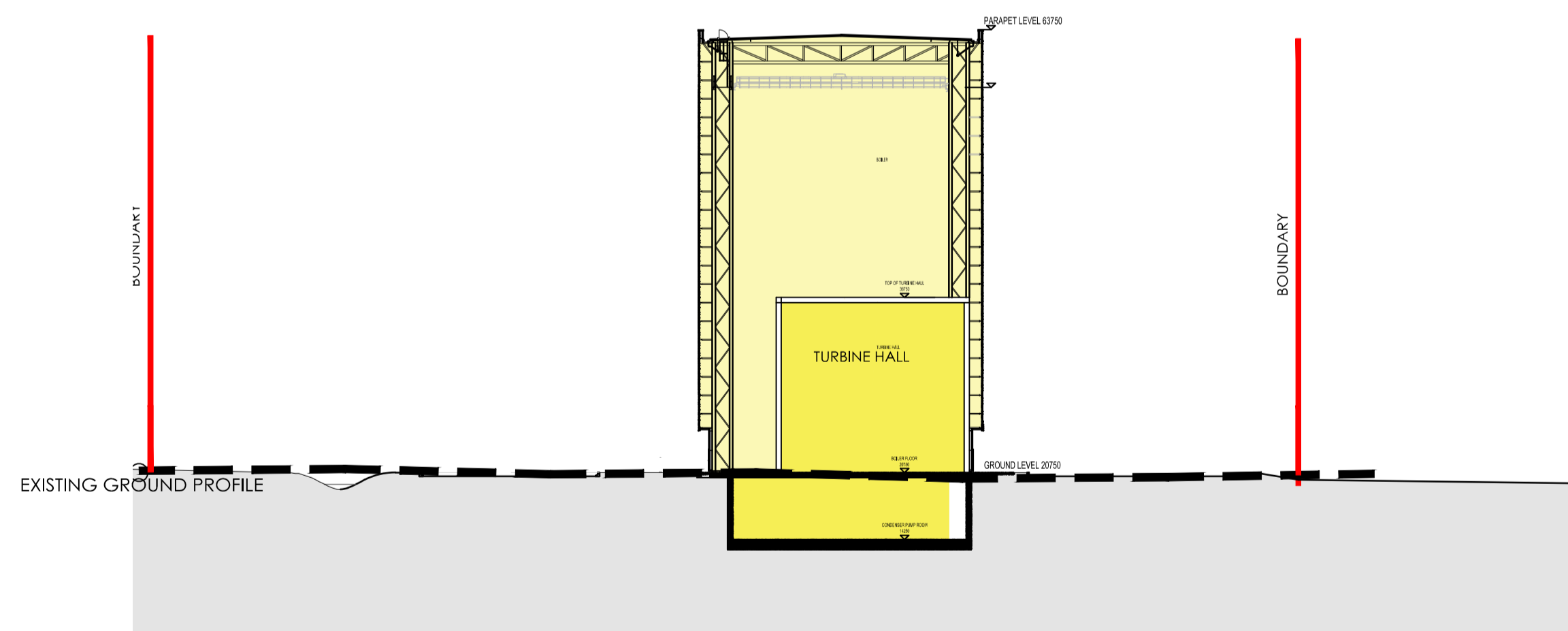
SECTION D-D

SECTION THROUGH BUNKER



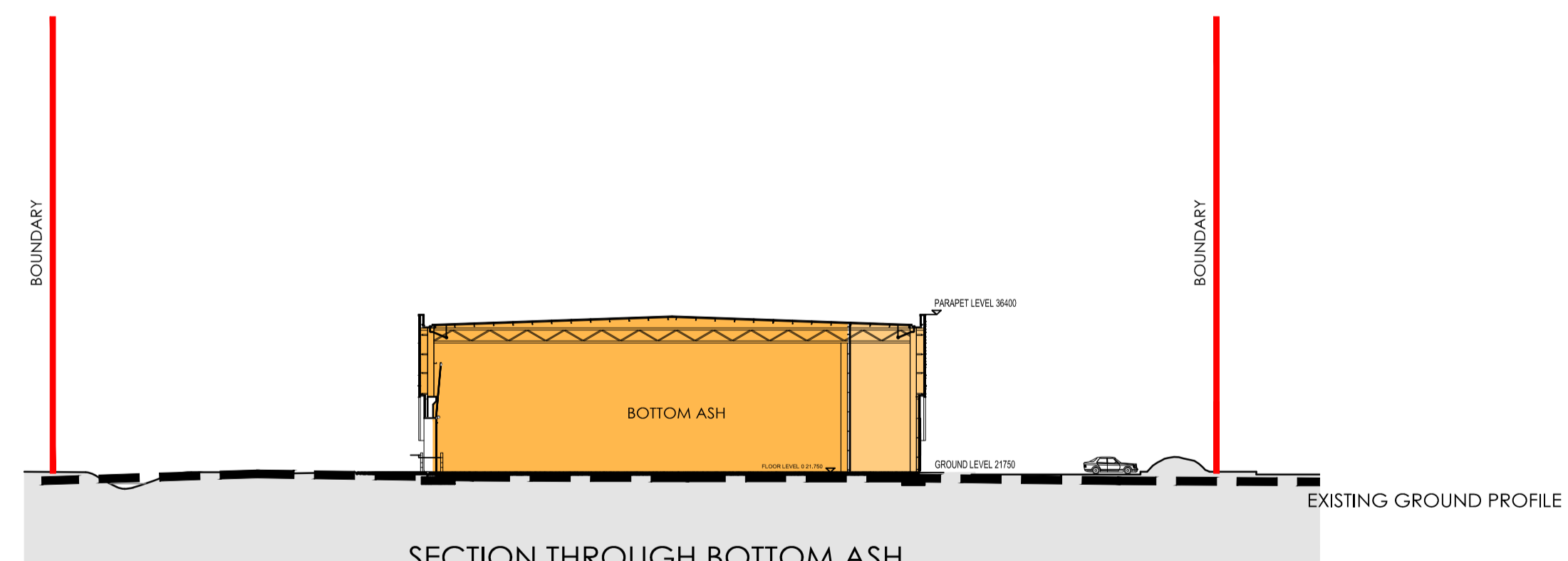
SECTION E-E

SECTION THROUGH TIPPING HALL



SECTION C-C

SECTION THROUGH BOILER ROOM



SECTION F-F

SECTION THROUGH BOTTOM ASH

**General Notes**

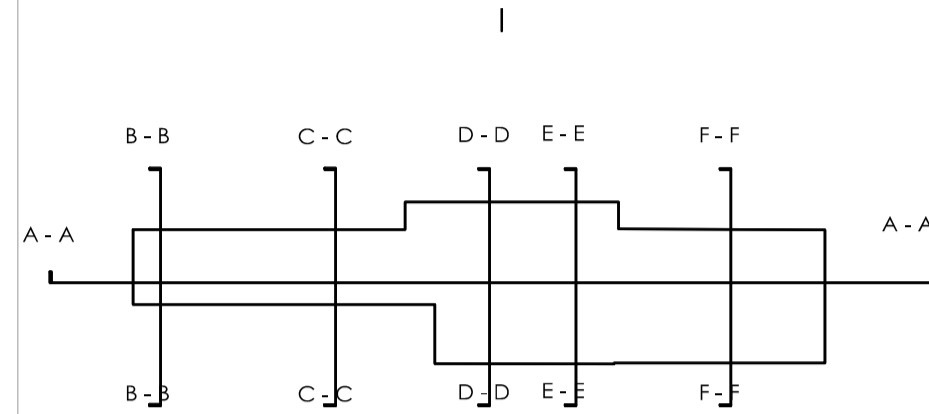
All site dimensions shall be verified by the Contractor on site prior to commencing any works.

Do not scale from this drawing.

Only work to written dimensions.

This drawing is the property of Fletcher-Rae (UK) Limited (t/a Fletcher-Rae) and copyright is reserved by them. The drawing is not to be copied or disclosed by or to any unauthorised persons without the prior written consent of Fletcher-Rae (UK) Limited.

**KEY**



**PLANNING**

Revision

Scale 1:500@A1/1:1000@A3  
 Status PL  
 Drawn by AL  
 Date 19.09.11

Client  
 URBASER / BALFOUR BEATTY

Project  
 GLOUCESTERSHIRE RESIDUAL  
 WASTE PROJECT  
 Drawing Description  
 CROSS SECTIONS

Drawing No. 11034-PL09 Rev.



Architecture | Master Planning | Project Management

Hill Quays, 5 Jordan Street, Manchester, M15 4PY

t +44 (0)161 242 1140  
 w www.fletcher-rae.com  
 f +44 (0)161 242 1141  
 e info@fletcher-rae.com

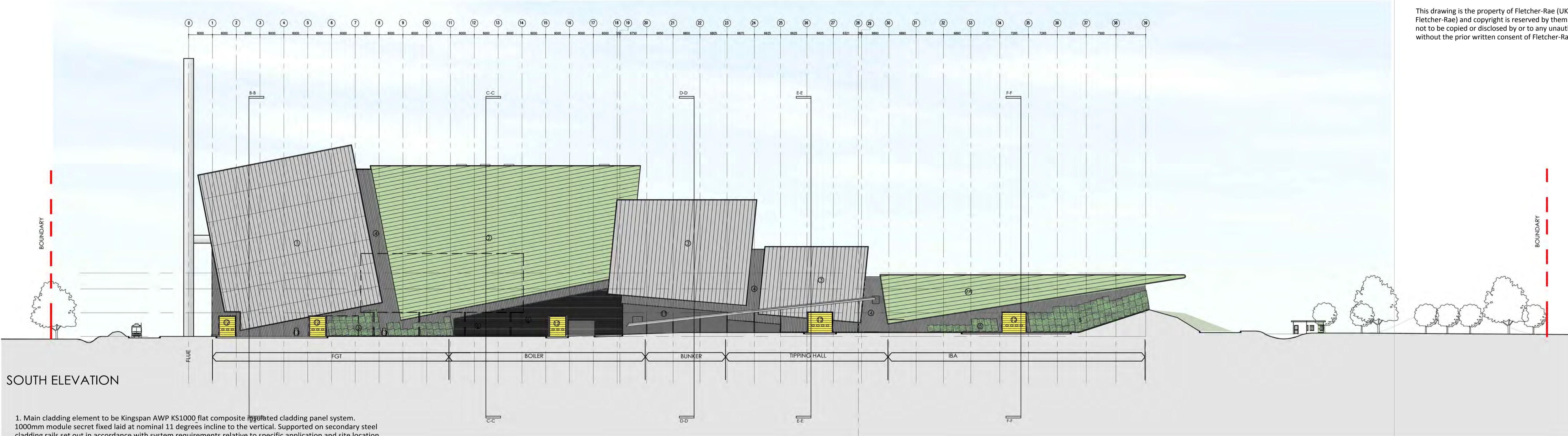
**General Notes**

All site dimensions shall be verified by the Contractor on site prior to commencing any works.

Do not scale from this drawing.

Only work to written dimensions.

This drawing is the property of Fletcher-Rae (UK) Limited (t/a Fletcher-Rae) and copyright is reserved by them. The drawing is not to be copied or disclosed by or to any unauthorised persons without the prior written consent of Fletcher-Rae (UK) Limited.



**SOUTH ELEVATION**

1. Main cladding element to be Kingspan AWP KS1000 flat composite insulated cladding panel system. 1000mm module secret fixed laid at nominal 11 degrees incline to the vertical. Supported on secondary steel cladding rails set out in accordance with system requirements relative to specific application and site location and extent of exposure. Horizontal drip flashings to be incorporated at panel ends Colour RAL 7040.
  2. Main cladding element to be Kingspan AWP KS1000 flat composite insulated cladding panel system. 1000mm module secret fixed laid at nominal 11 degrees incline to the horizontal. Supported on secondary steel cladding rails set out in accordance with system requirements relative to specific application and site location and extent of exposure. Vertical joints between panels to be set at 90 degrees (necessitating cut panels) and finished with proprietary top hat section. External finish - Kingspan XL Forte 'Symphony Collection' Coating System Colour RAL 6021.
  - 2A. Main cladding element to be Kingspan AWP KS1000 flat composite insulated cladding panel system. 1000mm module secret fixed laid at nominal 9 degrees incline to the horizontal. Supported on secondary steel cladding rails set out in accordance with system requirements relative to specific application and site location and extent of exposure. Vertical joints between panels to be set at 90 degrees (necessitating cut panels) and finished with proprietary top hat section. External finish - Kingspan XL Forte 'Symphony Collection' Coating System Colour RAL 6021.
  3. Main cladding element to be Kingspan AWP KS1000 flat composite insulated cladding panel system. 1000mm module secret fixed laid at nominal 6 degrees incline to the vertical. Supported on secondary steel cladding rails set out in accordance with system requirements relative to specific application and site location and extent of exposure. Vertical joints between panels to be set at 90 degrees and finished with proprietary top hat section Colour RAL 7040.
  4. Shadow cladding element between main elements and along lower edge of main element to be Kingspan KS profiled composite cladding panel system laid at nominal 6 degree incline to the vertical. Cut lapped horizontal jointing with exposed fixings. External finish - Kingspan XL Forte 'Symphony Collection' Coating System Colour RAL 7043.
  5. Galvanised mesh planting framework to be mechanically secured to shadow cladding, on proprietary galvanised top hat sheeting rails spacing mesh from face of cladding. Mesh panels to be fully trimmed around perimeter with edging channel.
  6. Overblade aluminium louvre to projecting soffit along north elevation. PPC finish with fly screen backing Colour RAL 7043.
  7. Aluminium curtain wall glazing to gable end to each side and over the top of the central solid cladding. No requirement for opening lights. Frame to receive PPC finish to standard RAL colour 7043. Double glazing to be toughened both panes, nominal 6:12:6 glass and cavity thickness. Glass to be clear polished float glass.
  8. FGT gable infill Main cladding element to be Kingspan AWP KS1000 flat composite insulated cladding panel system. 1000mm module secret fixed laid horizontal. Supported on secondary steel cladding rails set out in accordance with system requirements relative to specific application and site location and extent of exposure. Vertical joints between panels to be set at 90 degrees and finished with proprietary top hat section Colour RAL 6021.
  9. Condenser screening Main cladding element to be Kingspan AWP KS1000 flat composite insulated cladding panel system. 1000mm module secret fixed laid at horizontal Colour RAL 6021.
  10. Translucent cladding, (Rodecca or similar).
  11. Fair faced concrete.
  12. PPC insulated panel door Colour RAL 1023.
  13. PPC metal faced personnel / access doors Colour RAL 1023.
- Exhaust stack and fuel tanks to be galvanised steel



**EAST ELEVATION**

**PLANNING**

Revision	
Scale	1:500@A1/1:1000@A3
Status	PL
Drawn by	A
Date	19.09.11

Client  
**URBASER / BALFOUR BEATTY**

Project  
**GLOUCESTERSHIRE RESIDUAL WASTE PROJECT**  
Drawing Description  
**ELEVATIONS SHEET 1**

Drawing No. **11034-PL10** Rev.



**Architecture | Master Planning | Project Management**  
Hill Quays, 5 Jordan Street, Manchester, M15 4PY  
t +44 (0)161 242 1140  
w www.fletcher-rae.com  
f +44 (0)161 242 1141  
e info@fletcher-rae.com

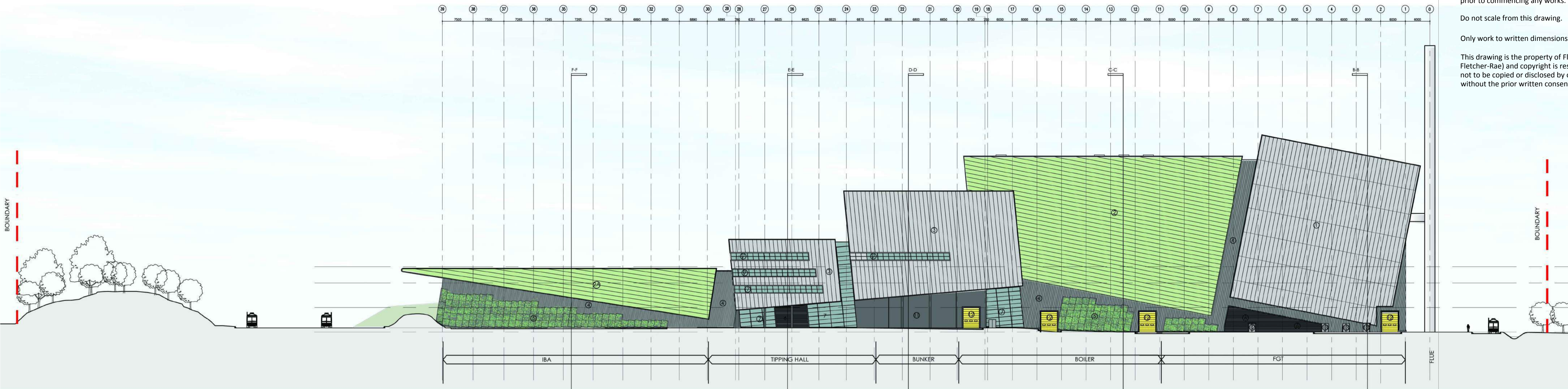
**General Notes**

All site dimensions shall be verified by the Contractor on site prior to commencing any works.

Do not scale from this drawing.

Only work to written dimensions.

This drawing is the property of Fletcher-Rae (UK) Limited (t/a Fletcher-Rae) and copyright is reserved by them. The drawing is not to be copied or disclosed by or to any unauthorised persons without the prior written consent of Fletcher-Rae (UK) Limited.



NORTH ELEVATION

**Schedule for cladding materials**

1. Main cladding element to be Kingspan AWP KS1000 flat composite insulated cladding panel system. 1000mm module secret fixed laid at nominal 11 degrees incline to the vertical. Supported on secondary steel cladding rails set out in accordance with system requirements relative to specific application and site location and extent of exposure. Horizontal drip flashings to be incorporated at panel ends Colour RAL 7040.

2. Main cladding element to be Kingspan AWP KS1000 flat composite insulated cladding panel system. 1000mm module secret fixed laid at nominal 11 degrees incline to the horizontal. Supported on secondary steel cladding rails set out in accordance with system requirements relative to specific application and site location and extent of exposure. Vertical joints between panels to be set at 90 degrees (necessitating cut panels) and finished with proprietary top hat section. External finish - Kingspan XL Forte 'Symphony Collection' Coating System Colour RAL 6021.

2A. Main cladding element to be Kingspan AWP KS1000 flat composite insulated cladding panel system. 1000mm module secret fixed laid at nominal 9 degrees incline to the horizontal. Supported on secondary steel cladding rails set out in accordance with system requirements relative to specific application and site location and extent of exposure. Vertical joints between panels to be set at 90 degrees (necessitating cut panels) and finished with proprietary top hat section. External finish - Kingspan XL Forte 'Symphony Collection' Coating System Colour RAL 6021.

3. Main cladding element to be Kingspan AWP KS1000 flat composite insulated cladding panel system. 1000mm module secret fixed laid at nominal 6 degrees incline to the vertical. Supported on secondary steel cladding rails set out in accordance with system requirements relative to specific application and site location and extent of exposure. Vertical joints between panels to be set at 90 degrees and finished with proprietary top hat section Colour RAL 7040.

4. Shadow cladding element between main elements and along lower edge of main element to be Kingspan KS profiled composite cladding panel system laid at nominal 6 degree incline to the vertical. Cut lapped horizontal jointing with exposed fixings. External finish - Kingspan XL Forte 'Symphony Collection' Coating System Colour RAL 7043.

5. Galvanised mesh planting framework to be mechanically secured to shadow cladding, on proprietary galvanised top hat sheeting rails spacing mesh from face of cladding. Mesh panels to be fully trimmed around perimeter with edging channel.

6. Overblade aluminium louvre to projecting soffit along north elevation. PPC finish with fly screen backing Colour RAL 7043.

7. Aluminium curtain wall glazing to gable end to each side and over the top of the central solid cladding. No requirement for opening lights. Frame to receive PPC finish to standard RAL colour 7043. Double glazing to be toughened both panes, nominal 6:12:6 glass and cavity thickness. Glass to be clear polished float glass.

8. FGT gable infill Main cladding element to be Kingspan AWP KS1000 flat composite insulated cladding panel system. 1000mm module secret fixed laid horizontal. Supported on secondary steel cladding rails set out in accordance with system requirements relative to specific application and site location and extent of exposure. Vertical joints between panels to be set at 90 degrees and finished with proprietary top hat section Colour RAL 6021.

9. Condenser screening Main cladding element to be Kingspan AWP KS1000 flat composite insulated cladding panel system. 1000mm module secret fixed laid at horizontal Colour RAL 6021.

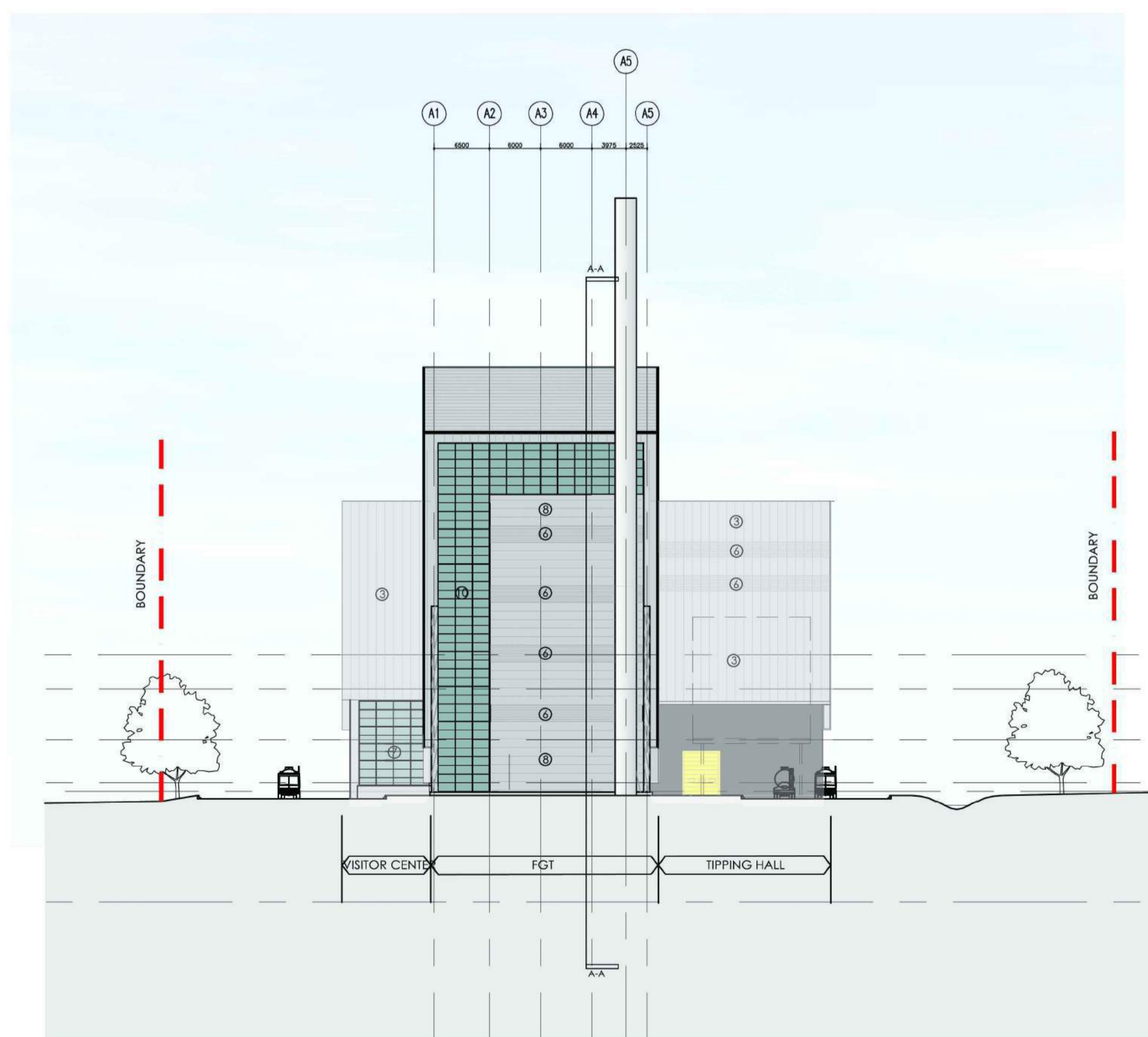
10. Translucent cladding, (Rodecca or similar).

11. Fair faced concrete.

12. PPC insulated panel door Colour RAL 1023.

13. PPC metal faced personnel / access doors Colour RAL 1023.

Exhaust stack and fuel tanks to be galvanised steel



WEST ELEVATION

**PLANNING**

Revision

Scale 1:500@A1/1:1000@A3

Status PL

Drawn by AL

Date 19.09.11

Client  
URBASER / BALFOUR BEATTY

Project  
GLOUCESTERSHIRE RESIDUAL  
WASTE PROJECT  
Drawing Description  
ELEVATIONS SHEET 2

Drawing No. 11034-PL11 Rev.



Architecture | Master Planning | Project Management

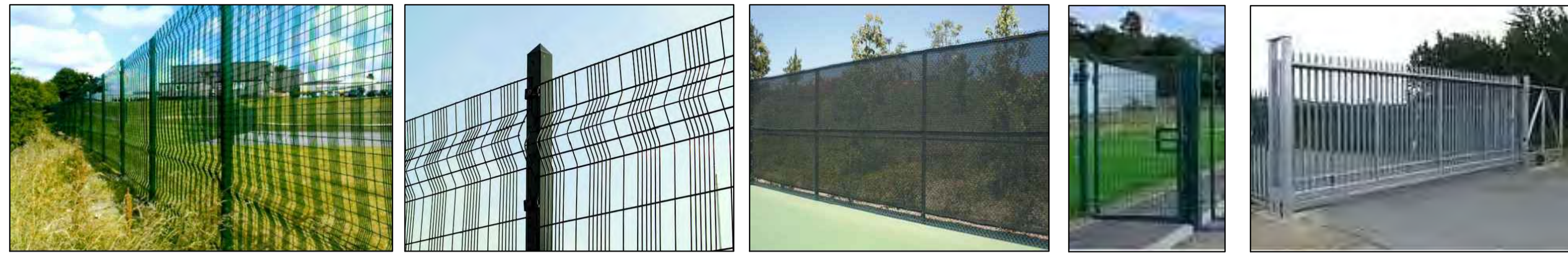
Hill Quays, 5 Jordan Street, Manchester, M15 4PY

t +44 (0)161 242 1140

w www.fletcher-rae.com

f +44 (0)161 242 1141

e info@fletcher-rae.com



Paladin Fencing - Indicative Image 1

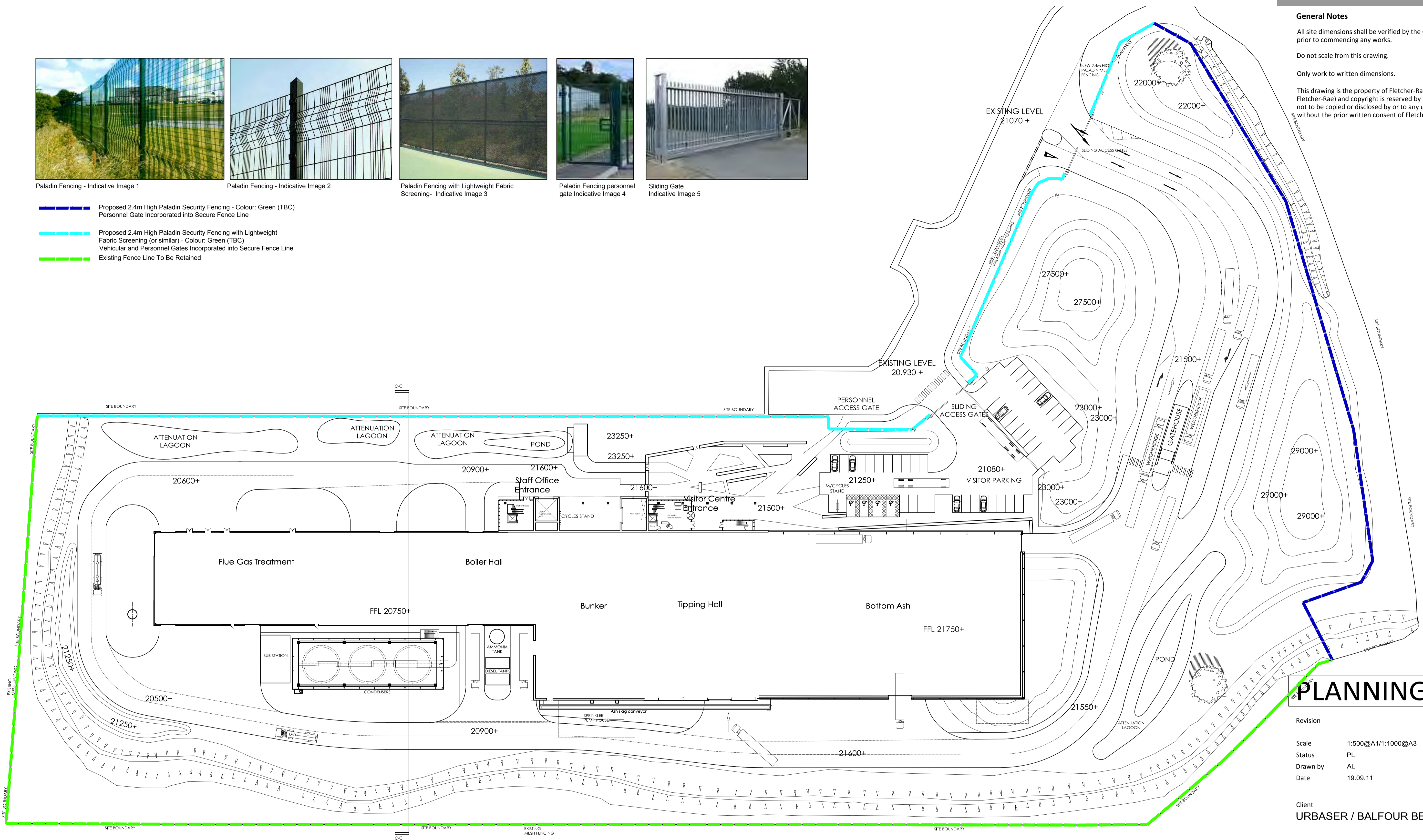
Paladin Fencing - Indicative Image 2

Paladin Fencing with Lightweight Fabric Screening- Indicative Image 3

Paladin Fencing personnel gate Indicative Image 4

Sliding Gate Indicative Image 5

- Proposed 2.4m High Paladin Security Fencing - Colour: Green (TBC)  
Personnel Gate Incorporated into Secure Fence Line
- Proposed 2.4m High Paladin Security Fencing with Lightweight Fabric Screening (or similar) - Colour: Green (TBC)  
Vehicular and Personnel Gates Incorporated into Secure Fence Line
- Existing Fence Line To Be Retained



**General Notes**

All site dimensions shall be verified by the Contractor on site prior to commencing any works.

Do not scale from this drawing.

Only work to written dimensions.

This drawing is the property of Fletcher-Rae (UK) Limited (t/a Fletcher-Rae) and copyright is reserved by them. The drawing is not to be copied or disclosed by or to any unauthorised persons without the prior written consent of Fletcher-Rae (UK) Limited.

# PLANNING

Revision

Scale 1:500@A1/1:1000@A3

Status PL

Drawn by AL

Date 19.09.11

Client  
**URBASER / BALFOUR BEATTY**

Project  
**GLOUCESTERSHIRE RESIDUAL WASTE PROJECT**  
Drawing Description  
**FENCING AND GATING PLAN**

Drawing No. 11034-PL12 Rev.



Architecture | Master Planning | Project Management

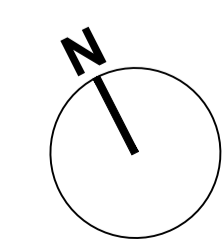
Hill Quays, 5 Jordan Street, Manchester, M15 4PY

t +44 (0)161 242 1140  
w www.fletcher-rae.com  
f +44 (0)161 242 1141  
e info@fletcher-rae.com

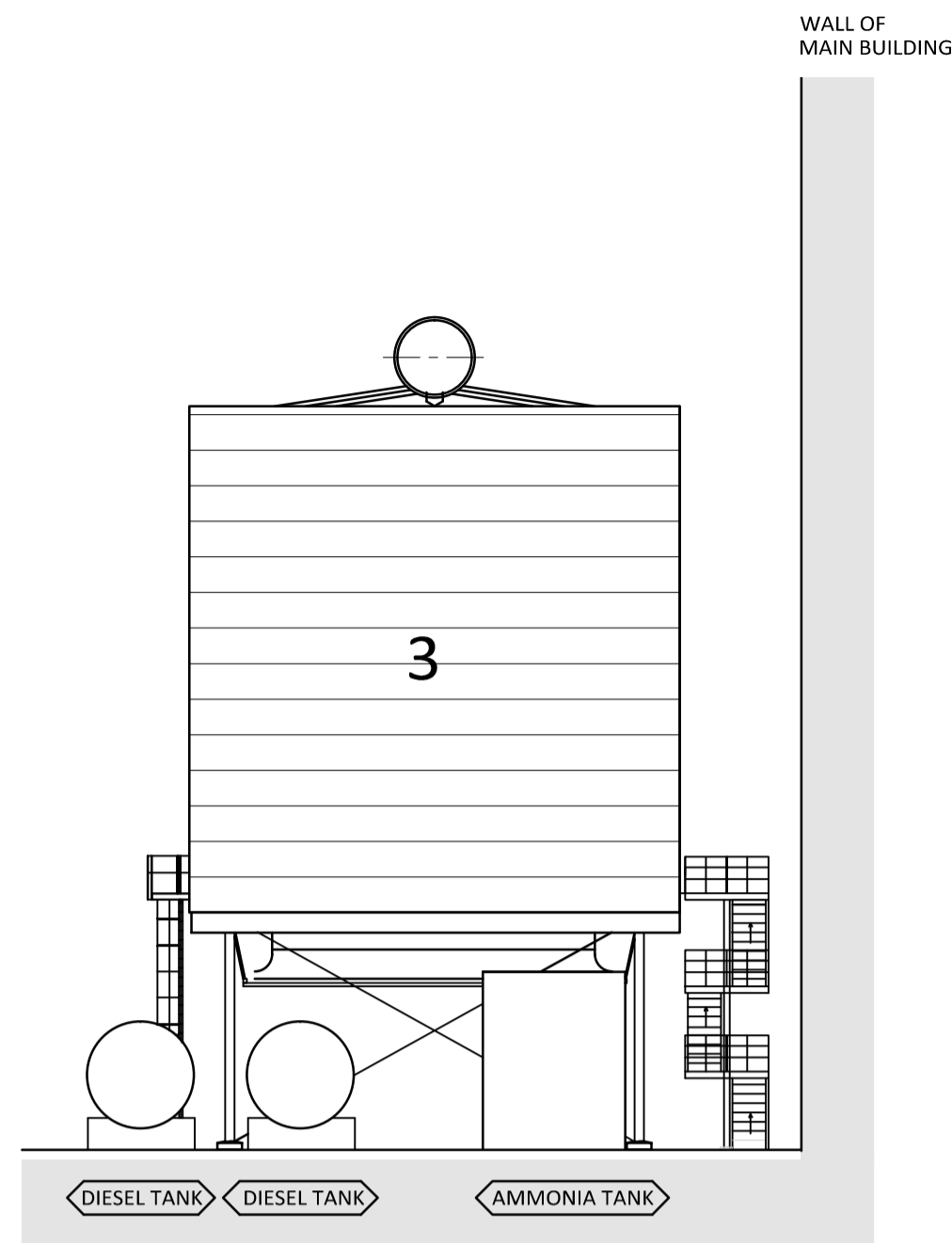
**NOTES:**

ALL LEVELS SHOWN ARE FINISHED LEVELS RELATING TO OS DATUM

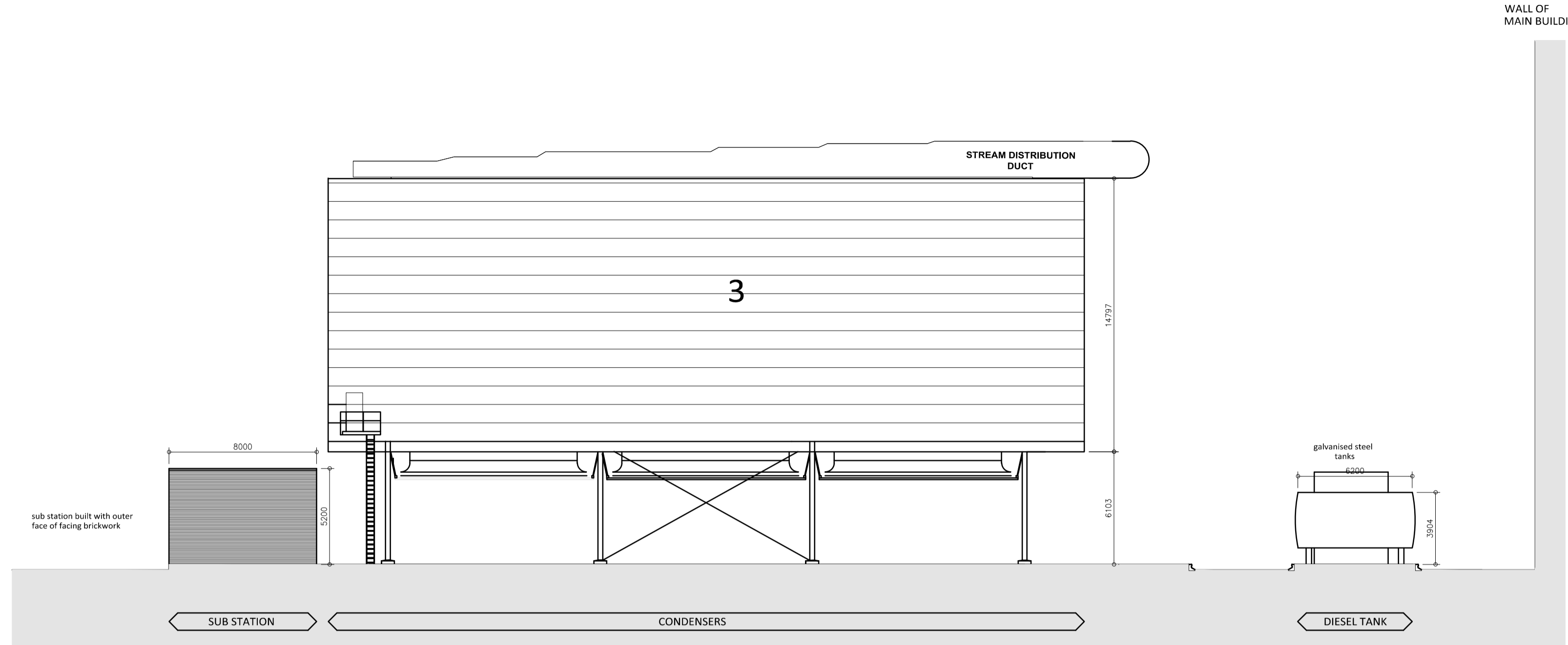
THE ILLUSTRATED LANDSCAPING IS INDICATIVE ONLY REFER TO DRAWING GCC-ISRS-LAN-942-03-01 FOR DETAILED LANDSCAPING SCHEME AND SURFACING MATERIALS / FINISHES



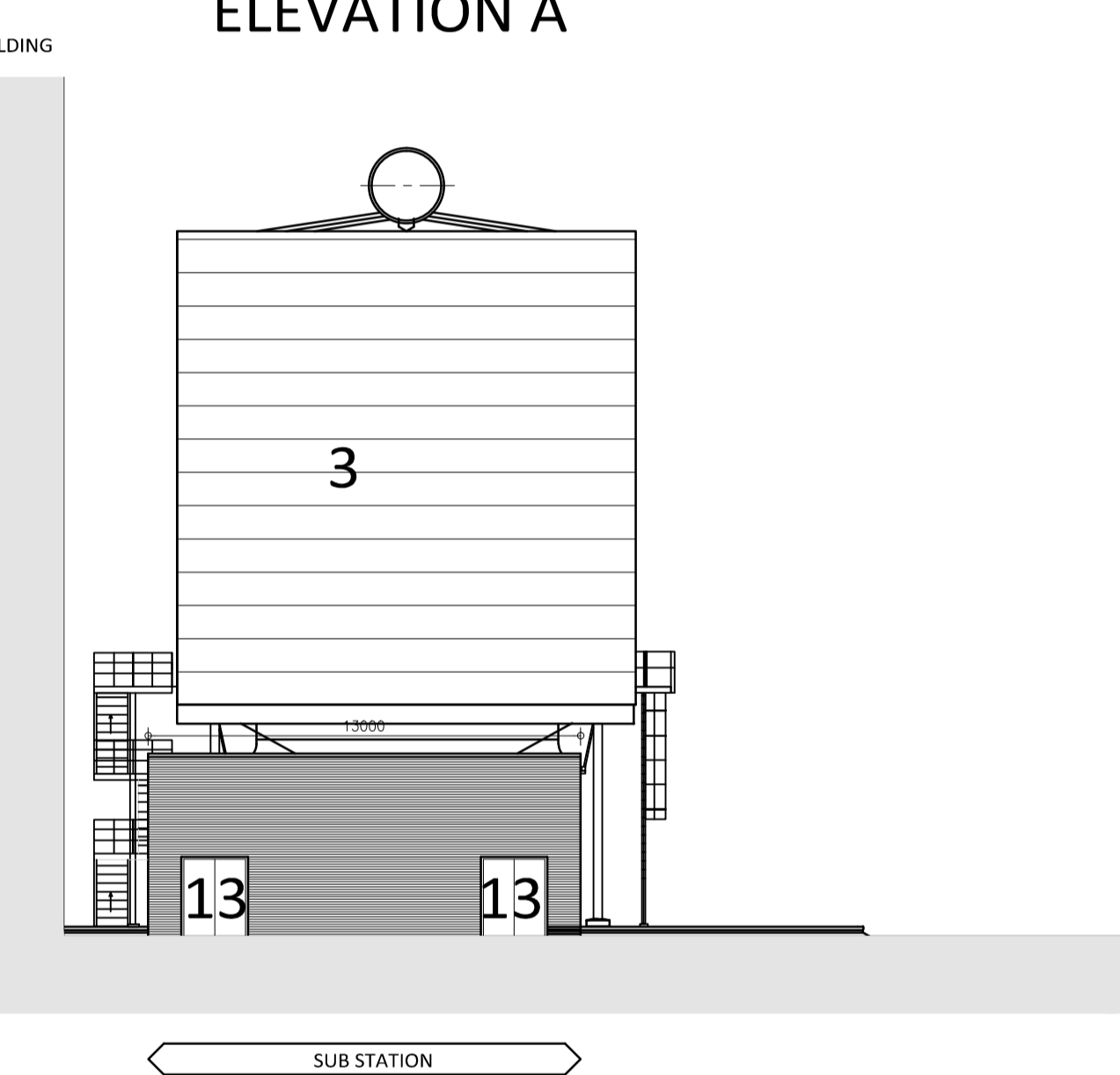




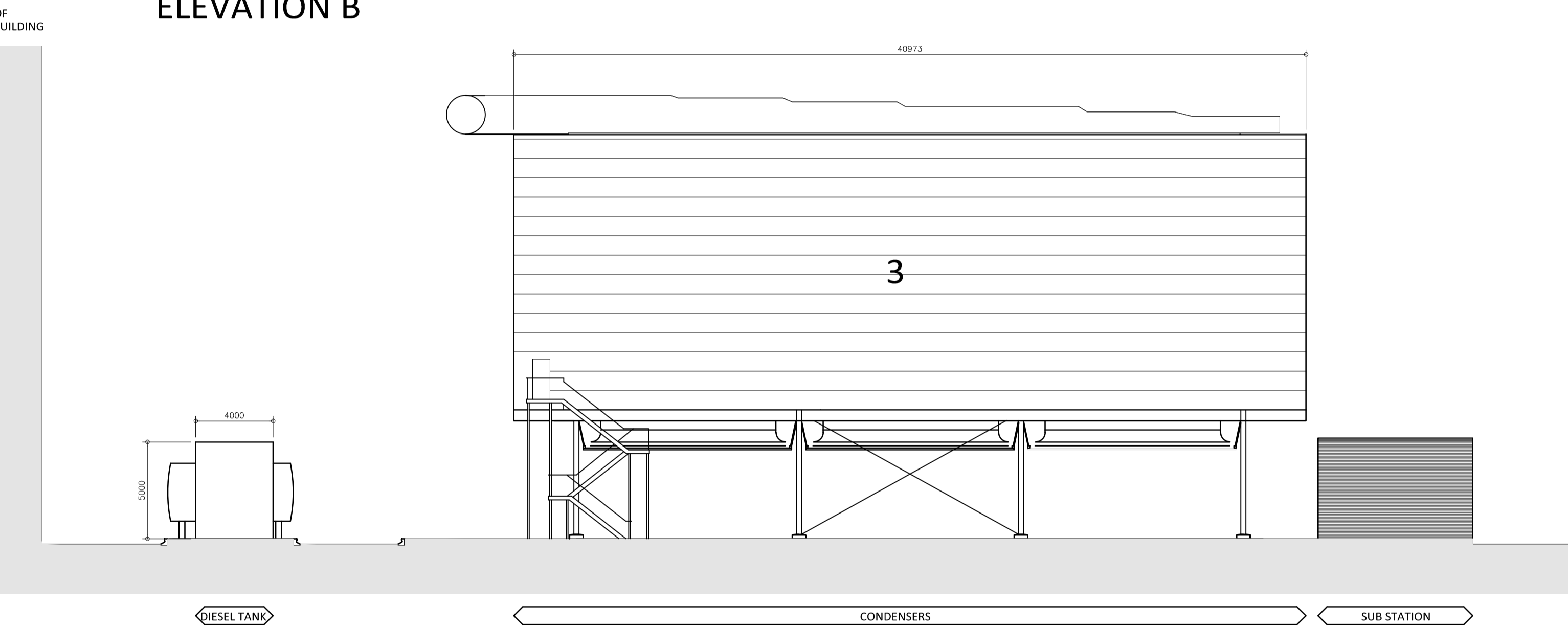
ELEVATION A



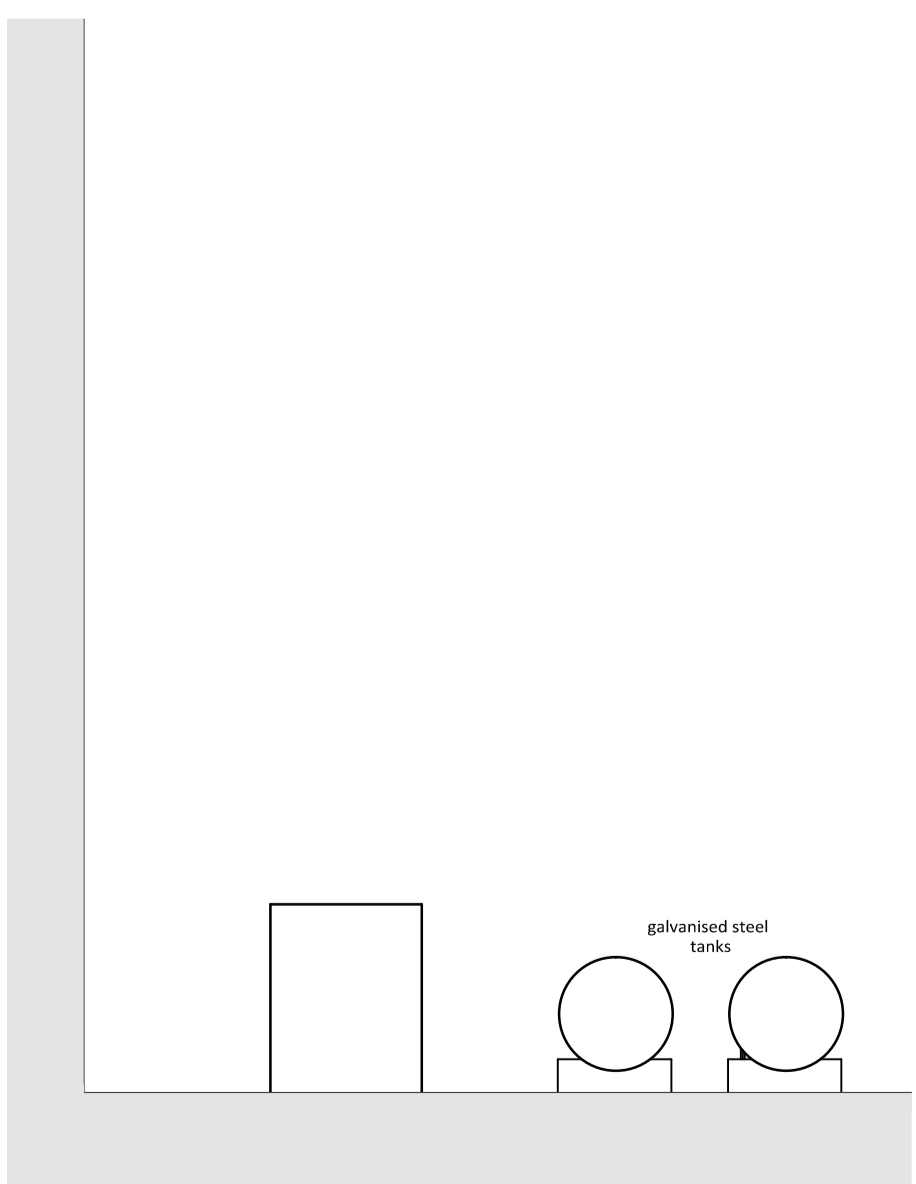
ELEVATION B



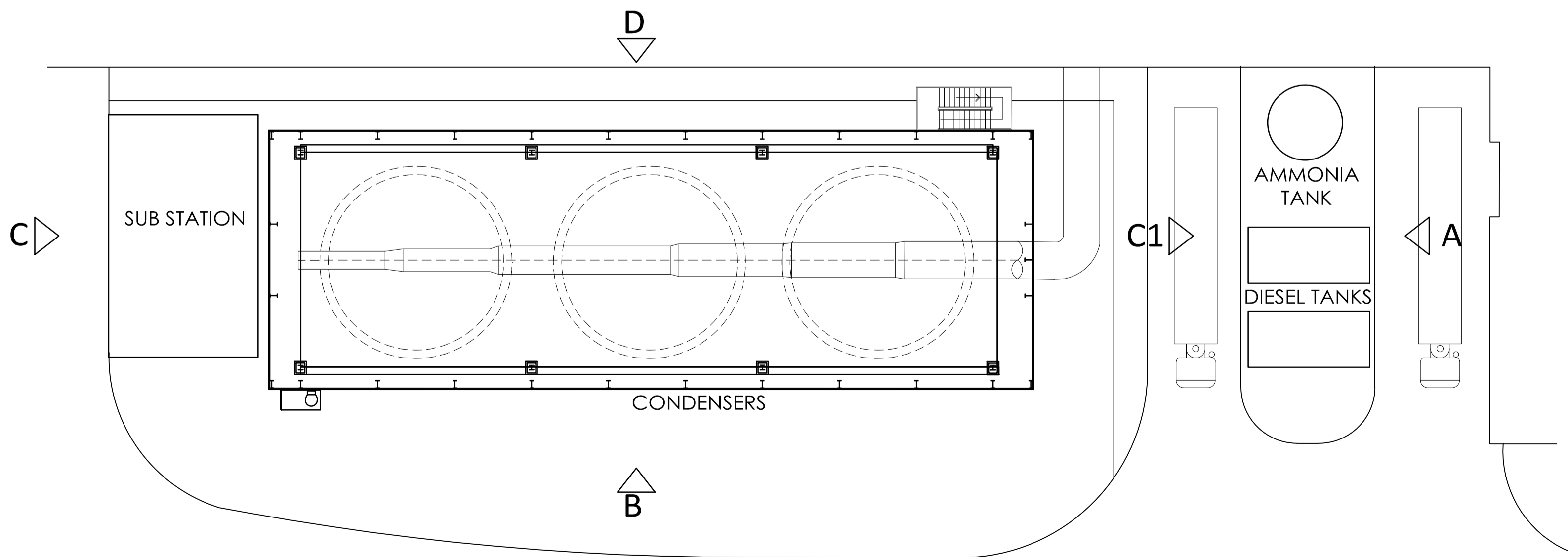
ELEVATION C



ELEVATION D



ELEVATION C1



KEY PLAN

**General Notes**

All site dimensions shall be verified by the Contractor on site prior to commencing any works.

Do not scale from this drawing.

Only work to written dimensions.

This drawing is the property of Fletcher-Rae (UK) Limited (t/a Fletcher-Rae) and copyright is reserved by them. The drawing is not to be copied or disclosed by or to any unauthorised persons without the prior written consent of Fletcher-Rae (UK) Limited.

**Schedule for cladding materials**

1. Main cladding element to be Kingspan AWP KS1000 flat composite insulated cladding panel system. 1000mm module secret fixed laid at nominal 11 degrees incline to the vertical. Supported on secondary steel cladding rails set out in accordance with system requirements relative to specific application and site location and extent of exposure. Horizontal drip flashings to be incorporated at panel ends Colour RAL 7040.

2. Main cladding element to be Kingspan AWP KS1000 flat composite insulated cladding panel system. 1000mm module secret fixed laid at nominal 11 degrees incline to the horizontal. Supported on secondary steel cladding rails set out in accordance with system requirements relative to specific application and site location and extent of exposure. Vertical joints between panels to be set at 90 degrees (necessitating cut panels) and finished with proprietary top hat section External finish - Kingspan XL Forte 'Symphony Collection' Coating System Colour RAL 6021.

2A. Main cladding element to be Kingspan AWP KS1000 flat composite insulated cladding panel system. 1000mm module secret fixed laid at nominal 9 degrees incline to the horizontal. Supported on secondary steel cladding rails set out in accordance with system requirements relative to specific application and site location and extent of exposure. Vertical joints between panels to be set at 90 degrees (necessitating cut panels) and finished with proprietary top hat section External finish - Kingspan XL Forte 'Symphony Collection' Coating System Colour RAL 6021.

3. Main cladding element to be Kingspan AWP KS1000 flat composite insulated cladding panel system. 1000mm module secret fixed laid at nominal 6 degrees incline to the vertical. Supported on secondary steel cladding rails set out in accordance with system requirements relative to specific application and site location and extent of exposure. Vertical joints between panels to be set at 90 degrees and finished with proprietary top hat section Colour RAL 7040.

4. Shadow cladding element between main elements and along lower edge of main element to be Kingspan KS profiled composite cladding panel system laid at nominal 6 degree incline to the vertical. Cut lapped horizontal jointing with exposed fixings. External finish - Kingspan XL Forte 'Symphony Collection' Coating System Colour RAL 7043.

5. Galvanised mesh planting framework to be mechanically secured to shadow cladding, on proprietary galvanised top hat sheeting rails spacing mesh from face of cladding. Mesh panels to be fully trimmed around perimeter with edging channel.

6. Overblade aluminium louvre to projecting soffit along north elevation. PPC finish with fly screen backing Colour RAL 7043.

7. Aluminium curtain wall glazing to gable end to each side and over the top of the central solid cladding. No requirement for opening lights. Frame to receive PPC finish to standard RAL colour 7043. Double glazing to be toughened both panes, nominal 6:12:6 glass and cavity thickness. Glass to be clear polished float glass.

8. FGT gable infill Main cladding element to be Kingspan AWP KS1000 flat composite insulated cladding panel system. 1000mm module secret fixed laid horizontal. Supported on secondary steel cladding rails set out in accordance with system requirements relative to specific application and site location and extent of exposure. Vertical joints between panels to be set at 90 degrees and finished with proprietary top hat section Colour RAL 6021.

9. Condenser screening Main cladding element to be Kingspan AWP KS1000 flat composite insulated cladding panel system. 1000mm module secret fixed laid at horizontal Colour RAL 6021.

10. Translucent cladding, (Rodecca or similar).

11. Fair faced concrete.

12. PPC insulated panel door Colour RAL 1023.

13. PPC metal faced personnel / access doors Colour RAL 1023.

Exhaust stack and fuel tanks to be galvanised steel

**PLANNING**

Revision / / /

Scale 1:100@A1

Status P

Drawn by PdeB

Date 30.09.11

Client  
URBASER / BALFOUR BEATTY

Project  
GLOUCESTERSHIRE RESIDUAL  
WASTE PROJECT  
Drawing Description  
ANCILLARY BUILDINGS

Drawing No. 11034 PL15 Rev. /



Architecture | Master Planning | Project Management

Hill Quays, 5 Jordan Street, Manchester, M15 4PY

t +44 (0)161 242 1140

w www.fletcher-rae.com

f +44 (0)161 242 1141

e info@fletcher-rae.com